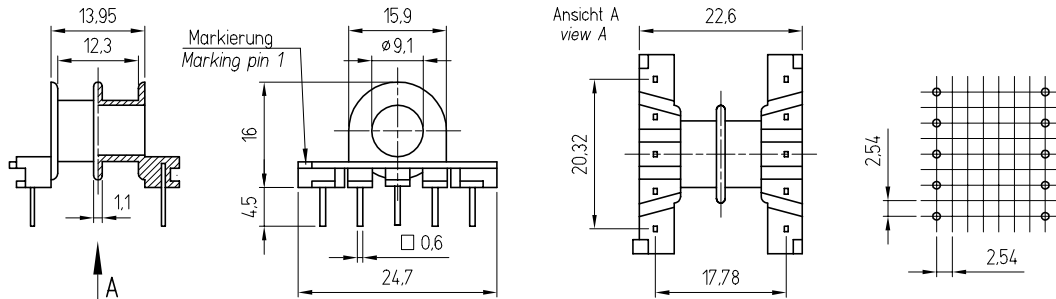




Spulenkörper - liegend  
Coilformer - horizontal



	Bezeichnung / description	
	SP - EP 20 - 1567	SP - EP 20 - 1423
Kammerzahl / no. of sections	1	2
$A_N$ in mm <sup>2</sup>	35,1	31,9
$l_N$ in mm	41,0	41,0
max. Stifzahl / max. no. of pins	10	10
Standardmaterial / standard material	Polyamid(e) 6.6 35%GF	Polyamid(e) 6.6 35%GF
Bestellnummer / order no.	589 201010 127	589 201020 127