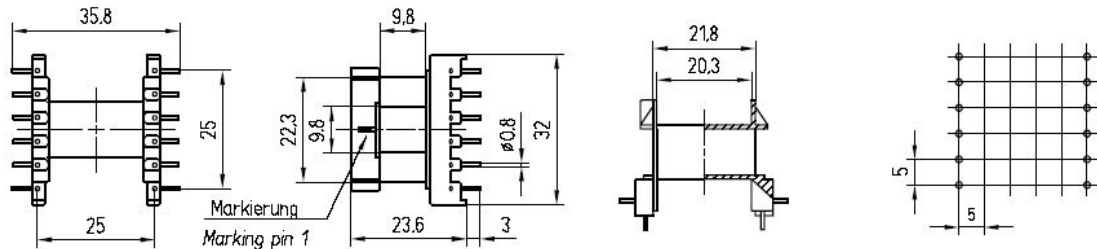


Spulenkörper E 32/9 (EF 32/9.5)  
Coilformer E 32/9 (EF 32/9.5)

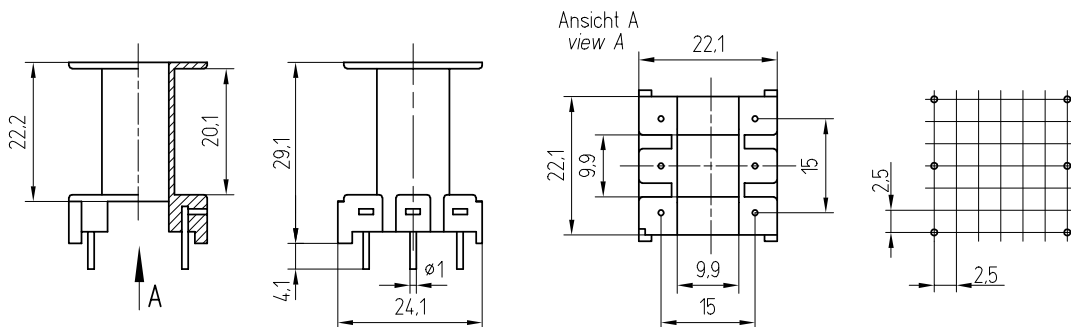


Spulenkörper - liegend  
Coilformer - horizontal



	Bezeichnung / description SP-E32/9-1352
Kammerzahl / no. of sections	1
$A_N$ in mm <sup>2</sup>	108,6
$l_N$ in mm	65,5
max. Stiftzahl / max. no. of pins	12
Standardmaterial / standard material	Polyamid(e) 6.6 35%GF
Bestellnummer / order no.	501 320910 12A

Spulenkörper - stehend  
Coilformer - vertical



	Bezeichnung / description SP - E 32/9 - 1353
Kammerzahl / no. of sections	1
$A_N$ in mm <sup>2</sup>	104,5
$l_N$ in mm	65,4
max. Stiftzahl / max. no. of pins	6
Standardmaterial / standard material	Polyamid(e) 6.6 35%GF
Bestellnummer / order no.	501 320910 11A