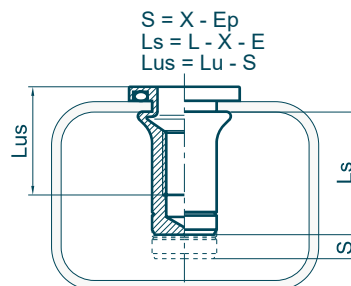
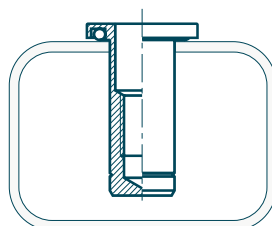
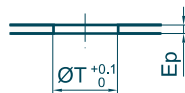
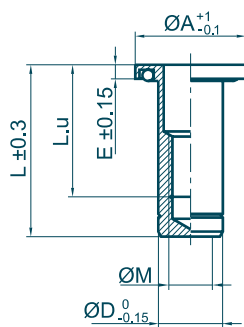




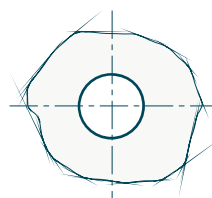
Écrous à sertir en aveugle Blind Rivet Nuts



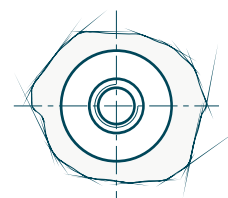
Matière : Inox 316L	Material : 316L Stainless Steel
Tête : Étanche	Head : Water tight
Fût : Cylindrique	Body : Round
Extrémité du fût : Borgne	Body end : Closed End
Option : Etylène Propylène	Option : Etylene Propylene



IP66 & IP67



Outillages de pose
Fastening tools
se référer à / refer to
TOOLIN'FIX



Ø M	Ep min max	Code	mm ØT	Ø A	L	L.u	E	Ø D	X indicative data	daN			kg x1000
										daN	N.m	N.m	
M3 x 0.50	0.0 - 1.1	17M030JRB011XEP	5.0	10.0	11.9	8.5	1.3	5.0	2.3	500	1.4	1.0	1.4
	0.0 - 1.7	17M030JRB017XEP	5.0	10.0	12.5	9.0	1.3	5.0	2.9	500	1.4	1.0	1.4
	1.0 - 2.3	17M030JRB023XEP	5.0	10.0	13.1	9.5	1.3	5.0	3.5	500	1.4	1.0	1.4
	2.3 - 3.0	17M030JRB030XEP	5.0	10.0	13.6	9.9	1.3	5.0	4.1	500	1.4	1.0	1.4
M4 x 0.70	0.0 - 1.3	17M040JRB013XEP	6.0	13.0	15.7	9.9	1.7	6.0	2.6	825	3.2	2.1	2.6
	0.8 - 2.1	17M040JRB021XEP	6.0	13.0	16.4	10.3	1.7	6.0	3.3	825	3.2	2.1	2.6
	1.8 - 3.0	17M040JRB030XEP	6.0	13.0	17.4	11.5	1.7	6.0	4.3	825	3.2	2.1	2.6
	2.5 - 3.7	17M040JRB037XEP	6.0	13.0	18.1	12.2	1.7	6.0	5.0	825	3.2	2.1	2.7
M5 x 0.80	0.0 - 1.5	17M050JRB015XEP	7.0	14.0	17.5	10.5	1.5	7.0	3.1	1150	6.4	3.2	3.6
	0.0 - 2.5	17M050JRB025XEP	7.0	14.0	18.5	11.5	1.5	7.0	4.1	1150	6.4	3.2	3.6
	1.0 - 3.5	17M050JRB035XEP	7.0	14.0	19.5	12.5	1.5	7.0	5.1	1150	6.4	3.2	3.7
	3.0 - 4.5	17M050JRB045XEP	7.0	14.0	20.5	13.5	1.5	7.0	6.1	1150	6.4	3.2	3.8
M6 x 1.00	0.0 - 1.5	17M060JRB015XEP	9.0	16.0	21.4	13.4	1.6	9.0	3.5	1950	11.1	6.0	7.1
	0.0 - 2.5	17M060JRB025XEP	9.0	16.0	22.4	14.0	1.6	9.0	4.5	1950	11.1	6.0	7.3
	1.0 - 3.5	17M060JRB035XEP	9.0	16.0	23.4	14.9	1.6	9.0	5.5	1950	11.1	6.0	7.4
	2.0 - 4.5	17M060JRB045XEP	9.0	16.0	24.3	15.8	1.6	9.0	6.5	1950	11.1	6.0	7.5
	3.0 - 5.5	17M060JRB055XEP	9.0	16.0	25.4	16.9	1.6	9.0	7.5	1950	11.1	6.0	7.7
M8 x 1.25	0.0 - 1.8	17M080JRB018XEP	11.0	19.0	24.9	16.0	2.0	11.0	4.0	3200	27	10.5	11.5
	0.5 - 3.0	17M080JRB030XEP	11.0	19.0	26.1	17.8	2.0	11.0	5.2	3200	27	10.5	11.7
	1.8 - 4.2	17M080JRB042XEP	11.0	19.0	27.3	18.4	2.0	11.0	6.4	3200	27	10.5	12.0
	2.5 - 5.0	17M080JRB050XEP	11.0	19.0	28.1	19.2	2.0	11.0	7.2	3200	27	10.5	12.2
	4.5 - 6.5	17M080JRB065XEP	11.0	19.0	29.6	20.7	2.0	11.0	8.7	3200	27	10.5	12.5
M10 x 1.50	0.0 - 2.5	17M100JRB025XEP	13.0	21.0	32.0	20.5	2.0	13.0	5.5	4350	53	16.4	18.6
	1.0 - 4.0	17M100JRB040XEP	13.0	21.0	33.8	22.0	2.0	13.0	7.0	4350	53	16.4	19.1
	2.5 - 5.5	17M100JRB050XEP	13.0	21.0	34.8	23.5	2.0	13.0	8.5	4350	53	16.4	19.2
	4.5 - 7.0	17M100JRB070XEP	13.0	21.0	36.3	25.5	2.0	13.0	10.0	4350	53	16.4	19.5
M12 x 1.75	0.0 - 4.2	17M120JRB042XEP	16.0	26.0	37.1	24.5	2.8	16.0	8.1	6500	92	23.5	34.6
	2.5 - 6.0	17M120JRB060XEP	16.0	26.0	39.9	27.3	2.8	16.0	9.9	6500	92	23.5	35.4
	4.0 - 7.6	17M120JRB076XEP	16.0	26.0	41.5	28.6	2.8	16.0	11.5	6500	92	23.5	36.2
	7.0 - 9.2	17M120JRB092XEP	16.0	26.0	42.3	29.5	2.8	16.0	13.1	6500	92	23.5	36.8
M14 x 2.00	0.0 - 3.0	17M140JRB030XEP	18.0	30.0	42.6	28.6	3.3	18.0	7.3	7800	148	31.5	51.1
	2.0 - 5.0	17M140JRB050XEP	18.0	30.0	44.6	30.6	3.3	18.0	9.3	7800	148	31.5	52.3
	4.0 - 7.0	17M140JRB070XEP	18.0	30.0	46.8	32.8	3.3	18.0	11.3	7800	148	31.5	53.7
	7.0 - 9.0	17M140JRB090XEP	18.0	30.0	48.9	34.9	3.3	18.0	13.3	7800	148	31.5	55.0
M16 x 2.00	0.0 - 3.2	17M160JRB032XEP	21.0	35.0	45.5	29.7	3.7	21.0	8.4	10500	232	41	73.5
	1.0 - 5.7	17M160JRB057XEP	21.0	35.0	48.0	32.2	3.7	21.0	10.9	10500	232	41	75.2
	3.5 - 8.2	17M160JRB082XEP	21.0	35.0	50.5	34.7	3.7	21.0	13.4	10500	232	41	76.9
	7.0 - 11.0	17M160JRB110XEP	21.0	35.0	53.3	37.2	3.7	21.0	16.2	10500	232	41	79.0