



Écrous à sertir en aveugle Blind Rivet Nuts



Matière : Aluminium

Material : Aluminium

Tête : Cylindrique

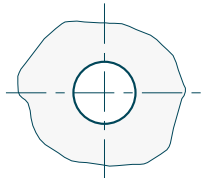
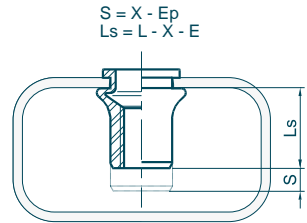
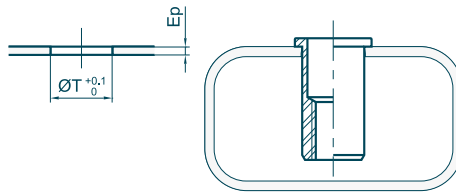
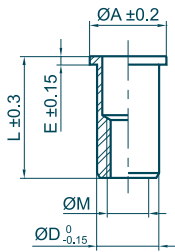
Head : Flange

Fût : Cylindrique

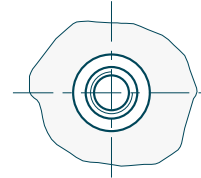
Body : Round

Extrémité du fût : Ouvert

Body end : Open Shape



Outillages de pose
Fastening tools
se référer à / refer to
TOOLIN'FIX



Ø M	Ep		Code	mm ØT	Ø A	L	E	Ø D	X indicative data				
	min	max											
M2.5 x 0.45	0.0 - 1.1	1.1	01U025CRO011X	4.0	6.0	6.9	0.6	4.0	2.4	165	0.6	0.6	0.1
	0.8 - 1.7	1.7	01U025CRO017X	4.0	6.0	7.5	0.6	4.0	3.0	165	0.6	0.6	0.1
M3 x 0.50	0.0 - 1.1	1.1	01U030CRO011X	5.0	7.0	7.9	0.8	5.0	2.2	225	0.8	0.8	0.2
	0.0 - 1.7	1.7	01U030CRO017X	5.0	7.0	8.5	0.8	5.0	2.8	225	0.8	0.8	0.2
	1.0 - 2.3	2.3	01U030CRO023X	5.0	7.0	9.1	0.8	5.0	3.4	225	0.8	0.8	0.3
	1.8 - 3.0	3.0	01U030CRO030X	5.0	7.0	9.7	0.8	5.0	4.0	225	0.8	0.8	0.3
M4 x 0.70	0.0 - 1.3	1.3	01U040CRO013X	6.0	8.0	10.1	0.8	6.0	2.6	400	1.9	1.9	0.4
	0.0 - 2.1	2.1	01U040CRO021X	6.0	8.0	10.9	0.8	6.0	3.4	400	1.9	1.9	0.4
	0.5 - 3.0	3.0	01U040CRO030X	6.0	8.0	11.9	0.8	6.0	4.3	400	1.9	1.9	0.4
	1.3 - 3.7	3.7	01U040CRO037X	6.0	8.0	12.5	0.8	6.0	5.0	400	1.9	1.9	0.4
M5 x 0.80	0.0 - 1.5	1.5	01U050CRO015X	7.0	9.0	11.7	1.0	7.0	3.0	650	3.8	3.2	0.6
	0.0 - 2.5	2.5	01U050CRO025X	7.0	9.0	12.7	1.0	7.0	4.0	650	3.8	3.2	0.6
	0.5 - 3.5	3.5	01U050CRO035X	7.0	9.0	13.7	1.0	7.0	5.0	650	3.8	3.2	0.6
	1.5 - 4.5	4.5	01U050CRO045X	7.0	9.0	14.7	1.0	7.0	6.0	650	3.8	3.2	0.7
M6 x 1.00	0.0 - 1.5	1.5	01U060CRO015X	9.0	11.0	14.4	1.2	9.0	3.4	1100	6.7	6.0	1.3
	0.0 - 2.5	2.5	01U060CRO025X	9.0	11.0	15.4	1.2	9.0	4.4	1100	6.7	6.0	1.4
	1.0 - 3.5	3.5	01U060CRO035X	9.0	11.0	16.4	1.2	9.0	5.4	1100	6.7	6.0	1.4
	2.0 - 4.5	4.5	01U060CRO045X	9.0	11.0	17.4	1.2	9.0	6.4	1100	6.7	6.0	1.5
M8 x 1.25	3.0 - 5.5	5.5	01U060CRO055X	9.0	11.0	18.4	1.2	9.0	7.4	1100	6.7	6.0	1.5
	0.0 - 1.8	1.8	01U080CRO018X	11.0	14.0	16.0	1.5	11.0	3.7	1750	16.2	10.5	2.0
	0.0 - 3.0	3.0	01U080CRO030X	11.0	14.0	17.3	1.5	11.0	4.9	1750	16.2	10.5	2.1
	1.2 - 4.2	4.2	01U080CRO042X	11.0	14.0	18.4	1.5	11.0	6.1	1750	16.2	10.5	2.2
M10 x 1.50	2.0 - 5.0	5.0	01U080CRO050X	11.0	14.0	19.5	1.5	11.0	6.9	1750	16.2	10.5	2.3
	3.5 - 6.5	6.5	01U080CRO065X	11.0	14.0	20.7	1.5	11.0	8.4	1750	16.2	10.5	2.4
	0.0 - 2.5	2.5	01U100CRO025X	13.0	16.0	21.3	1.5	13.0	5.3	2200	32	16.4	3.3
	0.5 - 4.0	4.0	01U100CRO040X	13.0	16.0	22.8	1.5	13.0	6.8	2200	32	16.4	3.5
M12 x 1.75	2.0 - 5.5	5.5	01U100CRO055X	13.0	16.0	24.5	1.5	13.0	8.3	2200	32	16.4	3.7
	4.0 - 7.0	7.0	01U100CRO070X	13.0	16.0	25.8	1.5	13.0	9.8	2200	32	16.4	3.8
	0.0 - 4.2	4.2	01U120CRO042X	16.0	20.0	25.9	1.7	16.0	7.3	3000	55	23.5	6.2
	2.0 - 6.0	6.0	01U120CRO060X	16.0	20.0	27.7	1.7	16.0	9.1	3000	55	23.5	6.4
M14 x 2.00	3.5 - 7.6	7.6	01U120CRO076X	16.0	20.0	29.3	1.7	16.0	10.7	3000	55	23.5	6.7
	6.0 - 9.2	9.2	01U120CRO092X	16.0	20.0	30.9	1.7	16.0	12.3	3000	55	23.5	6.9
	0.0 - 3.0	3.0	01U140CRO030X	18.0	23.0	28.6	2.0	18.0	7.0	3600	89	31.5	8.8
	1.0 - 5.0	5.0	01U140CRO050X	18.0	23.0	30.5	2.0	18.0	9.0	3600	89	31.5	9.2
M16 x 2.00	3.0 - 7.0	7.0	01U140CRO070X	18.0	23.0	32.5	2.0	18.0	11.0	3600	89	31.5	9.7
	6.0 - 9.0	9.0	01U140CRO090X	18.0	23.0	34.5	2.0	18.0	13.0	3600	89	31.5	10.1
	0.0 - 3.2	3.2	01U160CRO032X	21.0	26.0	30.3	2.5	21.0	8.2	5900	139	41	12.4
	0.0 - 5.7	5.7	01U160CRO057X	21.0	26.0	32.8	2.5	21.0	10.7	5900	139	41	13.1
M16 x 2.00	2.0 - 8.2	8.2	01U160CRO082X	21.0	26.0	35.3	2.5	21.0	13.2	5900	139	41	13.7
	6.0 - 11.0	11.0	01U160CRO110X	21.0	26.0	38.1	2.5	21.0	16.0	5900	139	41	14.5

Écrou à sertir en aveugle correspondant à l'ancienne désignation M ... CO ... ALUMINIUM
Blind Rivet Nuts corresponding to old designation M ... CO ... ALUMINIUM