

Écrous à sertir en aveugle Blind Rivet Nuts



Material : 316L Stainless Steel

Matière : Inox 316L

Head : Flush

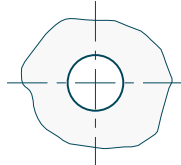
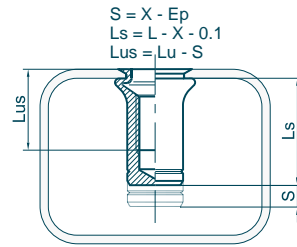
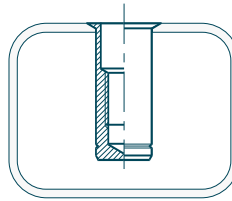
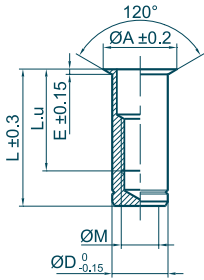
Tête : Affleurante

Body : Round

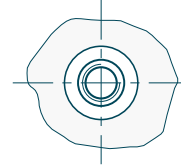
Fût : Cylindrique





Body end : Closed End

Extrémité du fût : Borgne



Outillages de pose
Fastening tools
se référer à / refer to
TOOLIN'FIX



Ø M	Ep		Code	mm ØT	Ø A	L	L.u	E	Ø D	X indicative data				
	min	max												
M2.5 x 0.45	0.0 - 1.1		01M025ARB011X	4.0	4.6	9.6	5.5	0.3	4.0	2.4	325	1.0	0.8	0.5
	1.0 - 1.7		01M025ARB017X	4.0	4.6	10.3	6.5	0.3	4.0	3.0	325	1.0	0.8	0.6
M3 x 0.50	0.0 - 1.1		01M030ARB011X	5.0	5.8	10.7	6.7	0.3	5.0	2.3	500	1.4	1.0	1.0
	1.0 - 2.3		01M030ARB023X	5.0	5.8	11.8	7.8	0.3	5.0	3.4	500	1.4	1.0	1.0
	2.3 - 3.2		01M030ARB032X	5.0	5.8	13.1	9.1	0.3	5.0	4.7	500	1.4	1.0	1.1
	3.2 - 4.1		01M030ARB041X	5.0	5.8	14.0	10.0	0.3	5.0	5.7	500	1.4	1.0	1.1
M4 x 0.70	0.0 - 1.3		01M040ARB013X	6.0	6.8	14.4	8.0	0.3	6.0	2.6	825	3.2	2.1	1.8
	1.0 - 2.3		01M040ARB023X	6.0	6.8	15.0	8.7	0.3	6.0	3.6	825	3.2	2.1	1.9
	1.8 - 3.0		01M040ARB030X	6.0	6.8	15.9	9.5	0.3	6.0	4.3	825	3.2	2.1	1.9
	3.0 - 4.2		01M040ARB042X	6.0	6.8	17.0	10.6	0.3	6.0	5.5	825	3.2	2.1	2.0
	4.2 - 5.5		01M040ARB055X	6.0	6.8	18.3	11.9	0.3	6.0	6.8	825	3.2	2.1	2.0
M5 x 0.80	0.0 - 1.5		01M050ARB015X	7.0	8.0	16.5	9.5	0.4	7.0	3.1	1150	6.4	3.2	2.7
	0.0 - 2.5		01M050ARB025X	7.0	8.0	17.4	10.4	0.4	7.0	4.1	1150	6.4	3.2	2.8
	1.0 - 3.5		01M050ARB035X	7.0	8.0	18.5	11.5	0.4	7.0	5.1	1150	6.4	3.2	2.9
	3.0 - 4.5		01M050ARB045X	7.0	8.0	19.5	12.5	0.4	7.0	6.1	1150	6.4	3.2	2.9
M6 x 1.00	0.0 - 1.5		01M060ARB015X	9.0	10.0	19.9	11.5	0.4	9.0	3.5	1950	11.1	6.0	5.9
	1.0 - 3.5		01M060ARB035X	9.0	10.0	21.9	13.5	0.4	9.0	5.5	1950	11.1	6.0	6.2
	2.0 - 4.5		01M060ARB045X	9.0	10.0	22.9	14.5	0.4	9.0	6.5	1950	11.1	6.0	6.3
	3.0 - 5.5		01M060ARB055X	9.0	10.0	23.9	15.5	0.4	9.0	7.5	1950	11.1	6.0	6.5
	4.5 - 6.5		01M060ARB065X	9.0	10.0	24.9	16.5	0.4	9.0	8.5	1950	11.1	6.0	6.6
M8 x 1.25	0.0 - 1.8		01M080ARB018X	11.0	12.0	23.6	14.3	0.4	11.0	4.0	3200	27	10.5	9.6
	0.5 - 3.0		01M080ARB030X	11.0	12.0	24.8	15.5	0.4	11.0	5.2	3200	27	10.5	10.0
	1.8 - 4.2		01M080ARB042X	11.0	12.0	26.0	16.7	0.4	11.0	6.4	3200	27	10.5	10.2
	2.5 - 5.0		01M080ARB050X	11.0	12.0	26.8	17.5	0.4	11.0	7.2	3200	27	10.5	10.3
	4.5 - 6.5		01M080ARB065X	11.0	12.0	28.3	19.0	0.4	11.0	8.7	3200	27	10.5	10.5
M10 x 1.50	0.0 - 3.2		01M100ARB032X	13.0	14.5	30.9	19.9	0.6	13.0	6.2	4350	53	16.4	15.9
	2.5 - 5.5		01M100ARB055X	13.0	14.5	33.4	22.0	0.6	13.0	8.5	4350	53	16.4	16.6
	3.5 - 6.5		01M100ARB065X	13.0	14.5	34.4	23.0	0.6	13.0	9.5	4350	53	16.4	16.8
	5.5 - 7.5		01M100ARB075X	13.0	14.5	35.4	24.0	0.6	13.0	10.5	4350	53	16.4	16.9
M12 x 1.75	0.0 - 4.2		01M120ARB042X	16.0	17.5	36.0	23.7	0.6	16.0	8.1	6500	92	23.5	27.0
	2.5 - 6.0		01M120ARB060X	16.0	17.5	36.3	24.0	0.6	16.0	9.9	6500	92	23.5	27.8
	4.0 - 7.6		01M120ARB076X	16.0	17.5	38.3	27.0	0.6	16.0	11.5	6500	92	23.5	28.0
	7.0 - 9.2		01M120ARB092X	16.0	17.5	39.6	28.3	0.6	16.0	13.1	6500	92	23.5	28.7
M14 x 2.00	0.0 - 3.0		01M140ARB030X	18.0	19.5	39.4	25.4	0.6	18.0	7.3	7800	148	31.5	38.9
	2.0 - 5.0		01M140ARB050X	18.0	19.5	41.4	27.4	0.6	18.0	9.3	7800	148	31.5	40.1
	4.0 - 7.0		01M140ARB070X	18.0	19.5	43.6	29.6	0.6	18.0	11.3	7800	148	31.5	41.4
	7.0 - 9.0		01M140ARB090X	18.0	19.5	45.7	31.7	0.6	18.0	13.3	7800	148	31.5	42.7
M16 x 2.00	0.0 - 3.2		01M160ARB032X	21.0	22.5	41.9	25.0	0.6	21.0	8.4	10500	232	41	56.0
	1.0 - 5.7		01M160ARB057X	21.0	22.5	44.4	27.5	0.6	21.0	10.9	10500	232	41	57.9
	3.5 - 8.2		01M160ARB082X	21.0	22.5	46.9	30.0	0.6	21.0	13.4	10500	232	41	59.8
	7.0 - 11.0		01M160ARB110X	21.0	22.5	49.7	32.5	0.6	21.0	16.2	10500	232	41	62.2

Écrou à sertir en aveugle correspondant à l'ancienne désignation M ... fB ... INOX MOLYBDENE
Blind Rivet Nuts corresponding to old designation M ... fB ... MOLYBDENUM STAINLESS STEEL