

Écrous à sertir en aveugle Blind Rivet Nuts



Material : 316L Stainless Steel

Matière : Inox 316L

Head : Flush

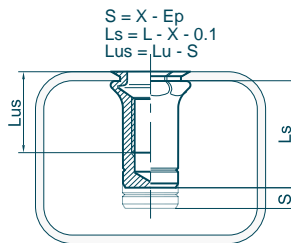
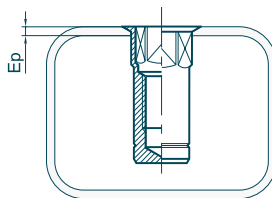
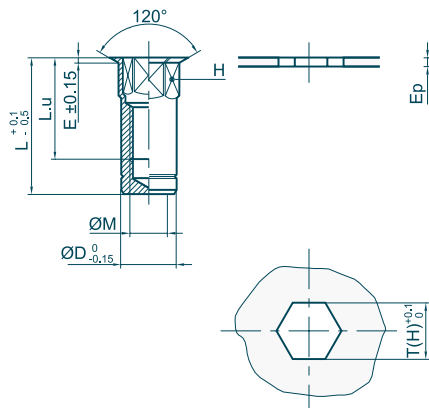
Tête : Affleurante

Body : Hexagonal

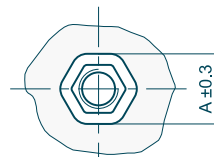
Fût : Hexagonal

Body end : Closed End

Extrémité du fût : Borgne



Outillages de pose
Fastening tools
se référer à / refer to
TOOLIN'FIX



Ø M	Ep min - max	Code	H	mm T(H)	A	L	L_u	E	Ø D	X indicative data	daN	N.m	N.m	kg x1000
M2.5 x 0.45	0.0 - 1.1	01M025AHB011X	4.0	4.0	4.6	9.6	5.5	0.3	4.0	2.4	325	1.0	1.0	0.5
	1.0 - 1.7	01M025AHB017X	4.0	4.0	4.6	10.3	6.5	0.3	4.0	3.0	325	1.0	1.0	0.6
M3 x 0.50	0.0 - 1.1	01M030AHB011X	5.0	5.0	5.8	10.7	6.7	0.3	5.0	2.3	500	1.4	1.3	1.0
	1.0 - 2.3	01M030AHB023X	5.0	5.0	5.8	11.8	7.8	0.3	5.0	3.4	500	1.4	1.3	1.0
	2.3 - 3.2	01M030AHB032X	5.0	5.0	5.8	13.1	9.1	0.3	5.0	4.7	500	1.4	1.3	1.1
	3.2 - 4.1	01M030AHB041X	5.0	5.0	5.8	14.0	10.0	0.3	5.0	5.7	500	1.4	1.3	1.1
M4 x 0.70	0.0 - 1.3	01M040AHB013X	6.0	6.0	6.8	14.4	8.0	0.3	6.0	2.6	825	3.2	3.1	1.8
	1.0 - 2.3	01M040AHB023X	6.0	6.0	6.8	15.0	8.7	0.3	6.0	3.6	825	3.2	3.1	1.9
	1.8 - 3.0	01M040AHB030X	6.0	6.0	6.8	15.9	9.5	0.3	6.0	4.3	825	3.2	3.1	1.9
	3.0 - 4.2	01M040AHB042X	6.0	6.0	6.8	17.0	10.6	0.3	6.0	5.5	825	3.2	3.1	2.0
	4.2 - 5.5	01M040AHB055X	6.0	6.0	6.8	18.3	11.9	0.3	6.0	6.8	825	3.2	3.1	2.0
M5 x 0.80	0.0 - 1.5	01M050AHB015X	7.0	7.0	8.0	16.5	9.5	0.4	7.0	3.1	1150	6.4	6.1	2.7
	0.5 - 2.5	01M050AHB025X	7.0	7.0	8.0	17.4	10.4	0.4	7.0	4.1	1150	6.4	6.1	2.8
	1.5 - 3.5	01M050AHB035X	7.0	7.0	8.0	18.5	11.5	0.4	7.0	5.1	1150	6.4	6.1	2.9
	3.0 - 4.5	01M050AHB045X	7.0	7.0	8.0	19.5	12.5	0.4	7.0	6.1	1150	6.4	6.1	2.9
M6 x 1.00	0.0 - 1.5	01M060AHB015X	9.0	9.0	10.0	19.9	11.5	0.4	9.0	3.5	1950	11.1	10.6	5.9
	1.5 - 3.5	01M060AHB035X	9.0	9.0	10.0	21.9	13.5	0.4	9.0	5.5	1950	11.1	10.6	6.2
	2.5 - 4.5	01M060AHB045X	9.0	9.0	10.0	22.9	14.5	0.4	9.0	6.5	1950	11.1	10.6	6.3
	3.5 - 5.5	01M060AHB055X	9.0	9.0	10.0	23.9	15.5	0.4	9.0	7.5	1950	11.1	10.6	6.5
	5.0 - 6.5	01M060AHB065X	9.0	9.0	10.0	24.9	16.5	0.4	9.0	8.5	1950	11.1	10.6	6.6
M8 x 1.25	0.0 - 1.8	01M080AHB018X	11.0	11.0	12.0	23.6	14.3	0.4	11.0	4.0	3200	27	25.8	9.6
	1.0 - 3.0	01M080AHB030X	11.0	11.0	12.0	24.8	15.5	0.4	11.0	5.2	3200	27	25.8	10.0
	2.2 - 4.2	01M080AHB042X	11.0	11.0	12.0	26.0	16.7	0.4	11.0	6.4	3200	27	25.8	10.2
	3.0 - 5.0	01M080AHB050X	11.0	11.0	12.0	26.8	17.5	0.4	11.0	7.2	3200	27	25.8	10.3
	4.5 - 6.5	01M080AHB065X	11.0	11.0	12.0	28.3	19.0	0.4	11.0	8.7	3200	27	25.8	10.5
M10 x 1.50	0.0 - 3.2	01M100AHB032X	13.0	13.0	14.5	30.9	19.9	0.6	13.0	6.2	4350	53	51	15.9
	2.5 - 5.5	01M100AHB055X	13.0	13.0	14.5	33.4	22.0	0.6	13.0	8.5	4350	53	51	16.6
	3.5 - 6.5	01M100AHB065X	13.0	13.0	14.5	34.4	23.0	0.6	13.0	9.5	4350	53	51	16.8
	5.5 - 7.5	01M100AHB075X	13.0	13.0	14.5	35.4	24.0	0.6	13.0	10.5	4350	53	51	16.9
M12 x 1.75	0.0 - 4.2	01M120AHB042X	16.0	16.0	17.5	36.0	23.7	0.6	16.0	8.1	6500	92	88	27.0
	2.5 - 6.0	01M120AHB060X	16.0	16.0	17.5	36.3	24.0	0.6	16.0	9.9	6500	92	88	27.8
	4.0 - 7.6	01M120AHB076X	16.0	16.0	17.5	38.3	27.0	0.6	16.0	11.5	6500	92	88	28.0
	7.0 - 9.2	01M120AHB092X	16.0	16.0	17.5	39.6	28.3	0.6	16.0	13.1	6500	92	88	28.7
M14 x 2.00	0.0 - 3.0	01M140AHB030X	18.0	18.0	19.5	39.4	25.4	0.6	18.0	7.3	7800	148	142	38.9
	2.0 - 5.0	01M140AHB050X	18.0	18.0	19.5	41.4	27.4	0.6	18.0	9.3	7800	148	142	40.1
	4.0 - 7.0	01M140AHB070X	18.0	18.0	19.5	43.6	29.6	0.6	18.0	11.3	7800	148	142	41.4
	7.0 - 9.0	01M140AHB090X	18.0	18.0	19.5	45.7	31.7	0.6	18.0	13.3	7800	148	142	42.7
M16 x 2.00	0.0 - 3.2	01M160AHB032X	21.0	21.0	22.5	41.9	25.0	0.6	21.0	8.4	10500	232	222	56.0
	1.0 - 5.7	01M160AHB057X	21.0	21.0	22.5	44.4	27.5	0.6	21.0	10.9	10500	232	222	57.9
	3.5 - 8.2	01M160AHB082X	21.0	21.0	22.5	46.9	30.0	0.6	21.0	13.4	10500	232	222	59.8
	7.0 - 11.0	01M160AHB110X	21.0	21.0	22.5	49.7	32.5	0.6	21.0	16.2	10500	232	222	62.2

Écrou à sertir en aveugle correspondant à l'ancienne désignation H ... fB ... INOX MOLYBDENE
Blind Rivet Nuts corresponding to old designation H ... fB ... MOLYBDENUM STAINLESS STEEL