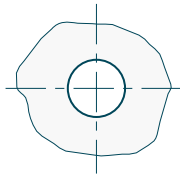
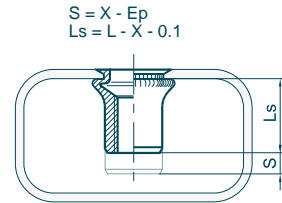
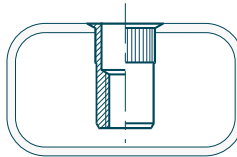
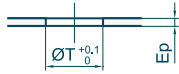
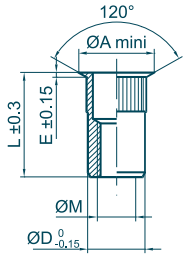




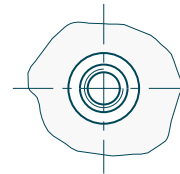
Écrous à sertir en aveugle Blind Rivet Nuts



Matière : Inox / Material : Stainless Steel
 Tête : Affleurante / Head : Flush
 Fût : Cannelé / Body : Knurled
 Extrémité du fût : Ouvert / Body end : Open Shape



Outillages de pose
Fastening tools
se référer à / refer to
TOOLIN'FIX



Ø M	Ep		Code	mm		Ø A	L	E	Ø D	X	Indicative data			kg x1000
	min	max		ØT	ØT						daN	N,m	N,m	
M2.5 x 0.45	0.0 - 1.1		011025ACO011X	4.0	4.5	6.4	0.3	4.0	2.4	325	1.0	0.8	0.3	
	1.0 - 1.7		011025ACO017X	4.0	4.5	7.1	0.3	4.0	3.0	325	1.0	0.8	0.3	
M3 x 0.50	0.0 - 1.1		011030ACO011X	5.0	5.7	6.7	0.3	5.0	2.3	500	1.4	1.0	0.5	
	1.0 - 2.3		011030ACO023X	5.0	5.7	7.9	0.3	5.0	3.4	500	1.4	1.0	0.6	
	2.3 - 3.2		011030ACO032X	5.0	5.7	9.1	0.3	5.0	4.7	500	1.4	1.0	0.6	
	3.2 - 4.1		011030ACO041X	5.0	5.7	10.0	0.3	5.0	5.7	500	1.4	1.0	0.6	
	4.1 - 5.0		011030ACO050X	5.0	5.7	11.1	0.3	5.0	6.8	500	1.4	1.0	0.6	
M4 x 0.70	0.0 - 1.3		011040ACO013X	6.0	6.7	8.4	0.3	6.0	2.6	825	3.2	2.1	0.9	
	1.0 - 2.3		011040ACO023X	6.0	6.7	9.7	0.3	6.0	3.6	825	3.2	2.1	0.9	
	1.8 - 3.0		011040ACO030X	6.0	6.7	9.9	0.3	6.0	4.3	825	3.2	2.1	0.9	
	3.0 - 4.2		011040ACO042X	6.0	6.7	12.1	0.3	6.0	5.5	825	3.2	2.1	1.0	
	4.2 - 5.5		011040ACO055X	6.0	6.7	13.6	0.3	6.0	6.8	825	3.2	2.1	1.1	
M5 x 0.80	0.0 - 1.5		011050ACO015X	7.0	7.9	9.6	0.4	7.0	3.1	1150	6.4	3.2	1.3	
	0.5 - 2.5		011050ACO025X	7.0	7.9	10.6	0.4	7.0	4.1	1150	6.4	3.2	1.3	
	1.5 - 3.5		011050ACO035X	7.0	7.9	11.6	0.4	7.0	5.1	1150	6.4	3.2	1.4	
	3.0 - 4.5		011050ACO045X	7.0	7.9	12.6	0.4	7.0	6.1	1150	6.4	3.2	1.5	
	4.5 - 5.5		011050ACO055X	7.0	7.9	13.6	0.4	7.0	7.1	1150	6.4	3.2	1.5	
M6 x 1.00	0.0 - 1.5		011060ACO015X	9.0	9.9	11.9	0.4	9.0	3.5	1950	11.1	6.0	2.9	
	1.5 - 3.5		011060ACO035X	9.0	9.9	13.9	0.4	9.0	5.5	1950	11.1	6.0	3.2	
	2.5 - 4.5		011060ACO045X	9.0	9.9	14.9	0.4	9.0	6.5	1950	11.1	6.0	3.4	
	3.5 - 5.5		011060ACO055X	9.0	9.9	15.9	0.4	9.0	7.5	1950	11.1	6.0	3.5	
	5.0 - 6.5		011060ACO065X	9.0	9.9	16.8	0.4	9.0	8.5	1950	11.1	6.0	3.6	
M8 x 1.25	0.0 - 1.8		011080ACO018X	11.0	11.9	14.4	0.4	11.0	4.0	3200	27	10.5	4.7	
	1.0 - 3.0		011080ACO030X	11.0	11.9	15.6	0.4	11.0	5.2	3200	27	10.5	5.0	
	2.2 - 4.2		011080ACO042X	11.0	11.9	16.8	0.4	11.0	6.4	3200	27	10.5	5.2	
	3.0 - 5.0		011080ACO050X	11.0	11.9	17.6	0.4	11.0	7.2	3200	27	10.5	5.4	
	4.5 - 6.5		011080ACO065X	11.0	11.9	19.1	0.4	11.0	8.7	3200	27	10.5	5.7	
M10 x 1.50	0.0 - 3.2		011100ACO032X	13.0	14.4	19.1	0.6	13.0	6.2	4350	53	16.4	7.9	
	2.5 - 5.5		011100ACO055X	13.0	14.4	21.4	0.6	13.0	8.5	4350	53	16.4	8.6	
	3.5 - 6.5		011100ACO065X	13.0	14.4	22.4	0.6	13.0	9.5	4350	53	16.4	8.8	
	5.5 - 7.5		011100ACO075X	13.0	14.4	23.4	0.6	13.0	10.5	4350	53	16.4	9.0	
M12 x 1.75	0.0 - 4.2		011120ACO042X	16.0	17.4	23.0	0.6	16.0	8.1	6500	92	23.5	14.3	
	2.5 - 6.0		011120ACO060X	16.0	17.4	24.4	0.6	16.0	9.9	6500	92	23.5	15.1	
	4.0 - 7.6		011120ACO076X	16.0	17.4	26.0	0.6	16.0	11.5	6500	92	23.5	15.6	
	7.0 - 9.2		011120ACO092X	16.0	17.4	27.6	0.6	16.0	13.1	6500	92	23.5	16.3	
M14 x 2.00	0.0 - 3.0		011140ACO030X	18.0	19.4	24.6	0.6	18.0	7.3	7800	148	31.5	20.1	
	2.0 - 5.0		011140ACO050X	18.0	19.4	26.6	0.6	18.0	9.3	7800	148	31.5	21.3	
	4.0 - 7.0		011140ACO070X	18.0	19.4	28.6	0.6	18.0	11.3	7800	148	31.5	22.5	
	7.0 - 9.0		011140ACO090X	18.0	19.4	30.6	0.6	18.0	13.3	7800	148	31.5	23.8	
M16 x 2.00	0.0 - 3.2		011160ACO032X	21.0	22.4	25.5	0.6	21.0	8.4	10500	232	41	27.5	
	1.0 - 5.7		011160ACO057X	21.0	22.4	28.0	0.6	21.0	10.9	10500	232	41	29.4	
	3.5 - 8.2		011160ACO082X	21.0	22.4	30.5	0.6	21.0	13.4	10500	232	41	31.3	
	7.0 - 11.0		011160ACO110X	21.0	22.4	33.3	0.6	21.0	16.2	10500	232	41	33.2	

Écrou à sertir en aveugle correspondant à l'ancienne désignation C ... fO ... INOX
 Blind Rivet Nuts corresponding to old designation C ... fO ... STAINLESS STEEL