

## Écrous à sertir en aveugle Blind Rivet Nuts



Matière : Acier

Material : Steel

Tête : Cylindrique

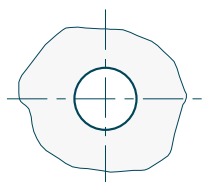
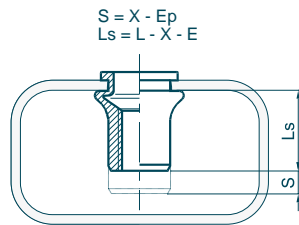
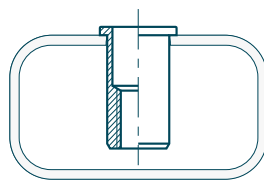
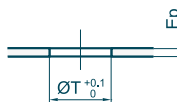
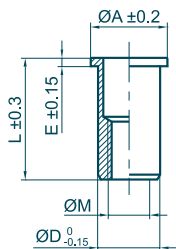
Head : Flange

Fût : Cylindrique

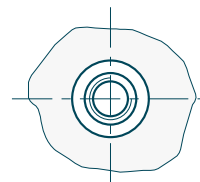
Body : Round





Extrémité du fût : Ouvert

Body end : Open Shape



Outillages de pose  
Fastening tools  
se référer à / refer to  
**TOOLIN'FIX**



Ø M	Ep		Code	mm ØT	Ø A	L	E	Ø D	X indicative data				
	min	max											
M2.5 x 0.45	0.0 - 1.1	1.1	01A025CRO011Z	4.0	6.0	6.9	0.6	4.0	2.4	300	1.0	0.8	0.4
	0.8 - 1.7	1.7	01A025CRO017Z	4.0	6.0	7.5	0.6	4.0	3.0	300	1.0	0.8	0.4
M3 x 0.50	0.0 - 1.1	1.1	01A030CRO011Z	5.0	7.0	7.9	0.8	5.0	2.2	450	1.4	1.0	0.7
	0.0 - 1.7	1.7	01A030CRO017Z	5.0	7.0	8.5	0.8	5.0	2.8	450	1.4	1.0	0.7
	1.0 - 2.3	2.3	01A030CRO023Z	5.0	7.0	9.1	0.8	5.0	3.4	450	1.4	1.0	0.7
	1.8 - 3.0	3.0	01A030CRO030Z	5.0	7.0	9.7	0.8	5.0	4.0	450	1.4	1.0	0.8
M4 x 0.70	0.0 - 1.3	1.3	01A040CRO013Z	6.0	8.0	10.1	0.8	6.0	2.6	750	3.2	2.1	1.2
	0.0 - 2.1	2.1	01A040CRO021Z	6.0	8.0	10.9	0.8	6.0	3.4	750	3.2	2.1	1.2
	0.5 - 3.0	3.0	01A040CRO030Z	6.0	8.0	11.9	0.8	6.0	4.3	750	3.2	2.1	1.3
	1.3 - 3.7	3.7	01A040CRO037Z	6.0	8.0	12.5	0.8	6.0	5.0	750	3.2	2.1	1.3
M5 x 0.80	0.0 - 1.5	1.5	01A050CRO015Z	7.0	9.0	11.7	1.0	7.0	3.0	1050	6.4	3.2	1.7
	0.0 - 2.5	2.5	01A050CRO025Z	7.0	9.0	12.7	1.0	7.0	4.0	1050	6.4	3.2	1.8
	0.5 - 3.5	3.5	01A050CRO035Z	7.0	9.0	13.7	1.0	7.0	5.0	1050	6.4	3.2	1.9
	1.5 - 4.5	4.5	01A050CRO045Z	7.0	9.0	14.7	1.0	7.0	6.0	1050	6.4	3.2	2.0
M6 x 1.00	0.0 - 1.5	1.5	01A060CRO015Z	9.0	11.0	14.4	1.2	9.0	3.4	1800	11.1	6.0	3.8
	0.0 - 2.5	2.5	01A060CRO025Z	9.0	11.0	15.4	1.2	9.0	4.4	1800	11.1	6.0	3.9
	1.0 - 3.5	3.5	01A060CRO035Z	9.0	11.0	16.4	1.2	9.0	5.4	1800	11.1	6.0	4.1
	2.0 - 4.5	4.5	01A060CRO045Z	9.0	11.0	17.4	1.2	9.0	6.4	1800	11.1	6.0	4.2
M8 x 1.25	3.0 - 5.5	5.5	01A060CRO055Z	9.0	11.0	18.4	1.2	9.0	7.4	1800	11.1	6.0	4.4
	0.0 - 1.8	1.8	01A080CRO018Z	11.0	14.0	16.0	1.5	11.0	3.7	2950	27	10.5	5.9
	0.0 - 3.0	3.0	01A080CRO030Z	11.0	14.0	17.3	1.5	11.0	4.9	2950	27	10.5	6.2
	1.2 - 4.2	4.2	01A080CRO042Z	11.0	14.0	18.4	1.5	11.0	6.1	2950	27	10.5	6.4
M10 x 1.50	2.0 - 5.0	5.0	01A080CRO050Z	11.0	14.0	19.5	1.5	11.0	6.9	2950	27	10.5	6.7
	3.5 - 6.5	6.5	01A080CRO065Z	11.0	14.0	20.7	1.5	11.0	8.4	2950	27	10.5	6.9
	0.0 - 2.5	2.5	01A100CRO025Z	13.0	16.0	21.3	1.5	13.0	5.3	4000	53	16.4	9.7
	0.5 - 4.0	4.0	01A100CRO040Z	13.0	16.0	22.8	1.5	13.0	6.8	4000	53	16.4	10.1
M12 x 1.75	2.0 - 5.5	5.5	01A100CRO055Z	13.0	16.0	24.5	1.5	13.0	8.3	4000	53	16.4	10.6
	4.0 - 7.0	7.0	01A100CRO070Z	13.0	16.0	25.8	1.5	13.0	9.8	4000	53	16.4	11.0
	0.0 - 4.2	4.2	01A120CRO042Z	16.0	20.0	25.9	1.7	16.0	7.3	6100	92	23.5	17.9
	2.0 - 6.0	6.0	01A120CRO060Z	16.0	20.0	27.7	1.7	16.0	9.1	6100	92	23.5	18.7
M14 x 2.00	3.5 - 7.6	7.6	01A120CRO076Z	16.0	20.0	29.3	1.7	16.0	10.7	6100	92	23.5	19.4
	6.0 - 9.2	9.2	01A120CRO092Z	16.0	20.0	30.9	1.7	16.0	12.3	6100	92	23.5	20.0
	0.0 - 3.0	3.0	01A140CRO030Z	18.0	23.0	28.6	2.0	18.0	7.0	7200	148	31.5	25.6
	1.0 - 5.0	5.0	01A140CRO050Z	18.0	23.0	30.5	2.0	18.0	9.0	7200	148	31.5	26.7
M16 x 2.00	3.0 - 7.0	7.0	01A140CRO070Z	18.0	23.0	32.5	2.0	18.0	11.0	7200	148	31.5	28.1
	6.0 - 9.0	9.0	01A140CRO090Z	18.0	23.0	34.5	2.0	18.0	13.0	7200	148	31.5	29.3
	0.0 - 3.2	3.2	01A160CRO032Z	21.0	26.0	30.3	2.5	21.0	8.2	10000	232	41	36.1
	0.0 - 5.7	5.7	01A160CRO057Z	21.0	26.0	32.8	2.5	21.0	10.7	10000	232	41	38.0
M16 x 2.00	2.0 - 8.2	8.2	01A160CRO082Z	21.0	26.0	35.3	2.5	21.0	13.2	10000	232	41	39.9
	6.0 - 11.0	11.0	01A160CRO110Z	21.0	26.0	38.1	2.5	21.0	16.0	10000	232	41	42.0

Écrou à sertir en aveugle correspondant à l'ancienne désignation M ... CO ... ACIER  
Blind Rivet Nuts corresponding to old designation M ... CO ... STEEL