



Écrous à sertir en aveugle Blind Rivet Nuts



Matière : Acier

Material : Steel

Tête : Affleurante

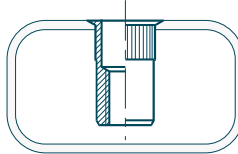
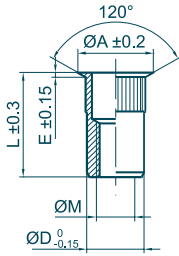
Head : Flush

Fût : Cannelé

Body : Knurled

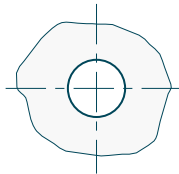
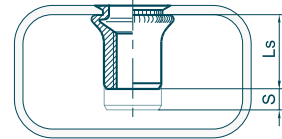
Extrémité du fût : Ouvert

Body end : Open Shape

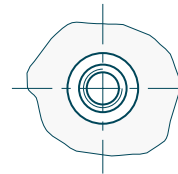


$$S = X - Ep$$

$$Ls = L - X - 0.1$$



Outillages de pose
Fastening tools
se référer à / refer to
TOOLIN'FIX



Ø M	Ep		Code	mm ØT	Ø A	L	E	Ø D	X indicative data				
	min	max											
M2.5 x 0.45	0.0 - 1.1	0.1A025ACO011Z	4.0	4.6	6.4	0.3	4.0	2.4	300	1.0	0.8	0.3	
	1.1 - 1.7	01A025ACO017Z	4.0	4.6	7.0	0.3	4.0	3.0	300	1.0	0.8	0.3	
M3 x 0.50	0.0 - 1.1	01A030ACO011Z	5.0	5.8	7.2	0.3	5.0	2.4	450	1.4	1.0	0.6	
	1.0 - 2.3	01A030ACO023Z	5.0	5.8	8.6	0.3	5.0	3.6	450	1.4	1.0	0.6	
	2.1 - 3.2	01A030ACO032Z	5.0	5.8	9.7	0.3	5.0	4.7	450	1.4	1.0	0.7	
	3.0 - 4.1	01A030ACO041Z	5.0	5.8	10.6	0.3	5.0	5.6	450	1.4	1.0	0.7	
	0.0 - 1.3	01A040ACO013Z	6.0	6.8	9.4	0.3	6.0	2.6	750	3.2	2.1	1.0	
M4 x 0.70	1.0 - 3.0	01A040ACO030Z	6.0	6.8	11.1	0.3	6.0	4.3	750	3.2	2.1	1.1	
	2.2 - 4.2	01A040ACO042Z	6.0	6.8	12.3	0.3	6.0	5.5	750	3.2	2.1	1.2	
	3.0 - 5.5	01A040ACO055Z	6.0	6.8	13.5	0.3	6.0	6.8	750	3.2	2.1	1.2	
	0.0 - 1.5	01A050ACO015Z	7.0	8.0	10.8	0.4	7.0	3.0	1050	6.4	3.2	1.5	
	0.5 - 2.5	01A050ACO025Z	7.0	8.0	11.8	0.4	7.0	4.0	1050	6.4	3.2	1.5	
M5 x 0.80	1.5 - 3.5	01A050ACO035Z	7.0	8.0	12.8	0.4	7.0	5.0	1050	6.4	3.2	1.6	
	2.5 - 4.5	01A050ACO045Z	7.0	8.0	13.8	0.4	7.0	6.0	1050	6.4	3.2	1.7	
	0.0 - 1.5	01A060ACO015Z	9.0	10.0	13.3	0.4	9.0	3.4	1800	11.1	6.0	3.3	
	1.5 - 3.5	01A060ACO035Z	9.0	10.0	15.3	0.4	9.0	5.4	1800	11.1	6.0	3.6	
	2.5 - 4.5	01A060ACO045Z	9.0	10.0	16.3	0.4	9.0	6.4	1800	11.1	6.0	3.8	
M6 x 1.00	3.5 - 5.5	01A060ACO055Z	9.0	10.0	17.3	0.4	9.0	7.4	1800	11.1	6.0	3.9	
	4.5 - 6.5	01A060ACO065Z	9.0	10.0	18.3	0.4	9.0	8.4	1800	11.1	6.0	4.2	
	0.0 - 1.8	01A080ACO018Z	11.0	12.0	14.7	0.4	11.0	3.7	2950	27	10.5	4.9	
	1.0 - 3.0	01A080ACO030Z	11.0	12.0	15.9	0.4	11.0	4.9	2950	27	10.5	5.1	
	2.3 - 4.2	01A080ACO042Z	11.0	12.0	17.2	0.4	11.0	6.2	2950	27	10.5	5.4	
M8 x 1.25	3.0 - 5.0	01A080ACO050Z	11.0	12.0	17.8	0.4	11.0	6.9	2950	27	10.5	5.6	
	4.5 - 6.5	01A080ACO065Z	11.0	12.0	19.3	0.4	11.0	8.4	2950	27	10.5	5.9	
	0.0 - 3.2	01A100ACO032Z	13.0	14.5	20.6	0.6	13.0	6.0	4000	53	16.4	8.8	
	2.0 - 5.5	01A100ACO055Z	13.0	14.5	22.9	0.6	13.0	8.3	4000	53	16.4	9.4	
	3.0 - 6.5	01A100ACO065Z	13.0	14.5	23.9	0.6	13.0	9.3	4000	53	16.4	9.7	
M10 x 1.50	4.5 - 7.5	01A100ACO075Z	13.0	14.5	24.9	0.6	13.0	10.3	4000	53	16.4	10.0	
	0.0 - 4.2	01A120ACO042Z	16.0	17.5	24.3	0.6	16.0	7.3	6100	92	23.5	15.8	
	2.0 - 6.0	01A120ACO060Z	16.0	17.5	26.1	0.6	16.0	9.1	6100	92	23.5	16.6	
	3.5 - 7.6	01A120ACO076Z	16.0	17.5	27.7	0.6	16.0	10.7	6100	92	23.5	17.3	
	6.0 - 9.2	01A120ACO092Z	16.0	17.5	29.2	0.6	16.0	12.3	6100	92	23.5	17.9	
M14 x 2.00	0.0 - 3.0	01A140ACO030Z	18.0	19.5	26.6	0.6	18.0	7.0	7200	148	31.5	21.9	
	1.0 - 5.0	01A140ACO050Z	18.0	19.5	28.6	0.6	18.0	9.0	7200	148	31.5	23.1	
	3.0 - 7.0	01A140ACO070Z	18.0	19.5	30.6	0.6	18.0	11.0	7200	148	31.5	24.4	
	6.0 - 9.0	01A140ACO090Z	18.0	19.5	32.6	0.6	18.0	13.0	7200	148	31.5	25.7	
M16 x 2.00	0.0 - 3.2	01A160ACO032Z	21.0	22.5	28.0	0.6	21.0	8.2	10000	232	41	30.7	
	0.0 - 5.7	01A160ACO057Z	21.0	22.5	30.5	0.6	21.0	10.7	10000	232	41	32.6	
	2.0 - 8.2	01A160ACO082Z	21.0	22.5	32.9	0.6	21.0	13.2	10000	232	41	34.5	
	6.0 - 11.0	01A160ACO110Z	21.0	22.5	35.7	0.6	21.0	16.0	10000	232	41	36.6	

Écrou à sertir en aveugle correspondant à l'ancienne désignation C ... FO ... ACIER
Blind Rivet Nuts corresponding to old designation C ... FO ... STEEL