

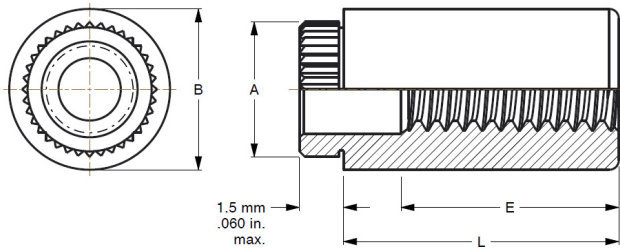


Broaching Type Standoffs

Series CKFE & CKFSE



CKFE and CKFSE threaded and non-threaded standoffs allow screws to be inserted through multiple layered boards for stacked assemblies. All fasteners from Captive Fastener are identical to industry standards so that they can be fed through standard automatic insertion equipment.



Series	Material	Finish
CKFE	Carbon Steel	Electro Tin Plating ASTM B545 Class B (Zinc* Clear Optional)
CKFSE	300 Series Stainless Steel	Passivated ASTM A967

Thread: Internal 2B, ANSI B1.1 (6H, ANSI/ASME B1.13M).

Use in: CKFE - Materials with Rockwell Hardness of B-60 or less.

CKFSE - Materials with Rockwell Hardness of B-70 or less.

Part Number Structure:

CKFE 440-4



Note: CKFE & CKFSE broaching standoffs are designed for unplated through-holes. When installed in plated through-holes, a hole tolerance of $+0.005 - .001$ in. ($+0.13 - .03$ mm) should be used.

When used in plated through-holes performance will be reduced and plating may be damaged by knurl.

† Not stocked, available on special order.

Note: Min Panel Thickness .060 in. (1.5mm)

*See Finish Spec. on Page 6.

Dimensions & Specifications

Thread	Thru Hole Size	Part Number	L Length ± 0.005 in.								A ± 0.003	B ± 0.005	+0.003 -0.000	Min.	
			Carbon Steel	Stainless Steel	.125	.250	.375	.500	.625	.750					.875
INCH (in.)	#4-40	CKFE440	CKFSE440	-4	-8	-12	-16	-20	-24†		.184	.219	.166	.17	
	#6-32	CKFE632	CKFSE632	-4	-8	-12	-16	-20	-24†	-28†	.231	.281	.213	.22	
	.116	CKFE116	CKFSE116	-4	-8	-12	-16	-20	-24†		.184	.219	.166	.17	
	.143	CKFE143	CKFSE143	-4	-8	-12	-16	-20	-24†	-28†	.231	.281	.213	.22	
E=minimum thread length			Full			.375 ± 0.015									
Thread	Size	Part Number	Length ± 0.13 mm								A ± 0.08	B ± 0.13	+0.08 -0.00	Min.	
			Carbon Steel	Stainless Steel	3	4	6	8	10	12					14
METRIC (mm)	M3x0.5	CKFEM3	CKFSEM3	-3	-4	-6	-8	-10	-12	-14	-16†	4.68	5.56	4.22	4.4
	3.6	CKFE3.6	CKFSE3.6	-3	-4	-6†	-8†	-10†	-12†	-14†	-16†	5.87	7.14	5.41	5.5
	4.2	CKFE4.2	CKFSE4.2	-3†	-4†	-6†	-8†	-10†	-12†	-14†	-16†	6.86	8.74	6.4	7.1
E=minimum thread length (where applicable)			Full			9.5 ± 0.4									

Installation & Performance Data

Thread	Fiberglass .060 in. (1.5 mm)		
	Installation Force (lbs.)	Pushout (lbs.)	Torque-out (in.-lbs.)
INCH (in.)			
#4-40	400	65	15
#6-32	500	80	30
METRIC (mm)			
Thread Size	Installation Force (kN)	Pushout (N)	Torque-out (N•m)
M3	2.2	290	1.7