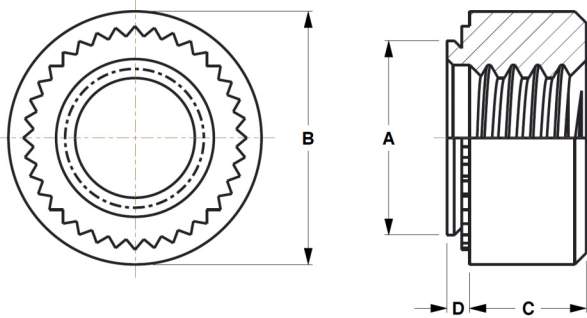


Self-Clinching Steel Heavy Duty Nuts

Series CFH & CFHN



CFH nut fasteners are available in both heat-treated and non-heat-treated versions, offering an opportunity to up-grade fastening quality with appreciable cost reduction over weld nuts.



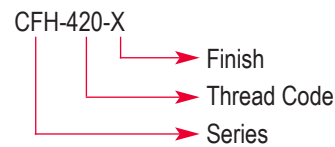
Series	Material	Finish
CFH-X	Heat-treated	None
CFH-ZI	Carbon Steel	Zinc* Clear
CFHN-X	Non-Heat-treated	None
CFHN-ZI	Carbon Steel	Zinc* Clear

*See Finish Spec. on Page 6.

Thread: Internal 2B, ANSI B1.1
(6H, ANSI/ASME B1.13M).

Use in: CFH-materials with Rockwell Hardness of B-80 or less.
CFHN -materials with Rockwell Hardness of B-60 or less.

Part Number Structure:



Dimensions & Specifications

	Thread Size	Part Number		D Max.	Min.	+0.005 in. (.13mm) -0.000(.00)	A Max.	B ±.01 in. (±.25 mm)	C ±.005 in. (±.13 mm)	Min.
		Heat Treated	Non-Heat Treated							
INCH	1/4-20	CFH420	CFHN420	.058	.058	.344	.343	.500	.189	.380
METRIC	M6 x 1.0	CFHM6	CFHNM6	1.48	1.48	8.75	8.72	12.7	5.0	10.0

Installation & Performance Data

	Thread Size	Material	Panel Thickness	Installation Force	Pushout	Torque-out
INCH	1/4-20	Cold-rolled Steel	.060 in.	4800 lbs.	450 lbs.	120 in.-lbs.
		Aluminum	.062 in.	3500 lbs.	370 lbs.	110 in.-lbs.
METRIC	M6	Cold-rolled Steel	2.24 mm	33 kN	2020 N	23.5 N•m
		Aluminum	2.29 mm	22 kN	1760 N	21.5 N•m