



SECTION 7 CONTENTS

CABLE MANAGEMENT

Bushings 140
 Cable Clamps 138-139
 Cable Ties 139
 Grommets 141
 Routing Clip 139

CASE HARDWARE

Anti-Vibration Grommets 141
 Bumpers 142
 Hole Plugs 140

COMPUTER BRACKETS 136-137

MOUNTING BRACKETS 132-133

PC BOARD GUIDES 134-135

PC CARD EJECTORS 134

TERMINALS

Turret, Uninsulated 148
 Insulated 148

TERMINAL BOARDS/STRIPS

Turret 148
 Quick-Fit 148
 Solder Tab 148

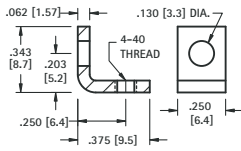
UNIVERSAL HARDWARE

Eyelets/Rivets 146
 Key Hole Clips 145
 Machine Nuts 143
 Screws 143
 Staking Tools 147
 Washers 144-145

THREADED MOUNTING BRACKETS

THREADED MOUNTING BRACKETS

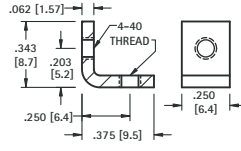
4-40 THREAD



CAT. NO. 612

MATERIAL:
.062 (1.57) Steel, Zinc Plate

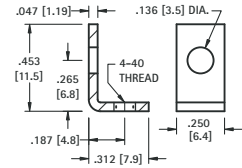
4-40 THREAD



CAT. NO. 621

MATERIAL:
.062 (1.57) Steel, Zinc Plate

4-40 THREAD

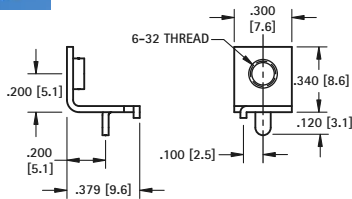


CAT. NO. 616

MATERIAL:
.047 (1.19) Brass, Tin Plate

6-32 THREAD

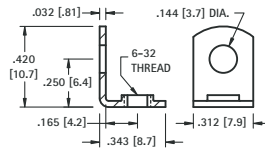
THRU-HOLE MOUNT



CAT. NO. 632

MATERIAL:
.032 (.81) Brass, Tin Plate

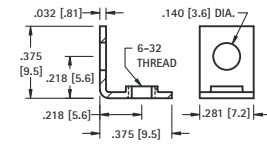
6-32 THREAD



CAT. NO. 614

MATERIAL:
.032 (.81) Brass, Tin Plate

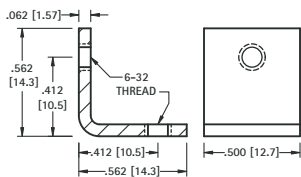
6-32 THREAD



CAT. NO. 634

MATERIAL:
.032 (.81) Brass, Nickel Plate

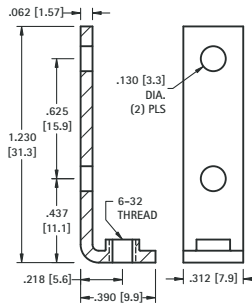
6-32 THREAD



CAT. NO. 4334

MATERIAL:
.062 (1.57) Steel, Nickel Plate

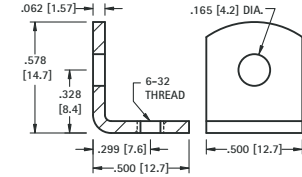
6-32 THREAD



CAT. NO. 708

MATERIAL:
.062 (1.57) Steel, Nickel Plate

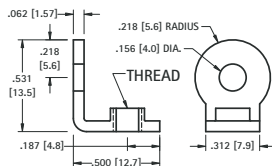
6-32 THREAD



CAT. NO. 617

MATERIAL:
.062 (1.57) Steel, Tin Plate

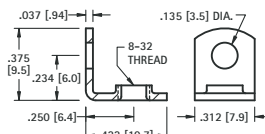
6-32 OR 8-32 THREAD



CAT. NO.	THREAD
4332	6-32
4333	8-32

MATERIAL:
.062 (1.57) Brass, Nickel Plate

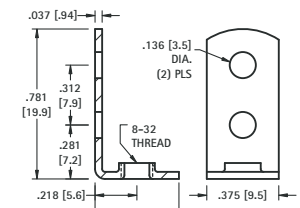
8-32 THREAD



CAT. NO. 611

MATERIAL:
.037 (.94) Brass, Tin Plate

8-32 THREAD

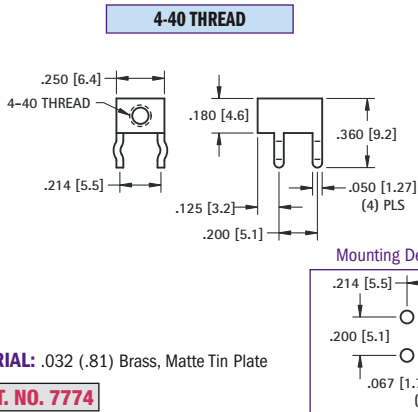
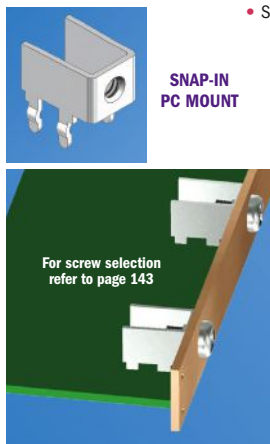


CAT. NO. 631

MATERIAL:
.037 (.94) Steel, Tin Plate

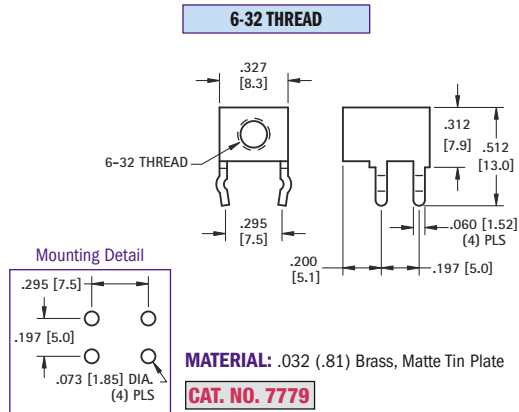
SNAP-IN THREADED PC MOUNT BRACKETS

- Snaps in for wave soldering • Reduces assembly time • Easily mount into predrilled or punched holes • Stable no rock design



MATERIAL: .032 (.81) Brass, Matte Tin Plate

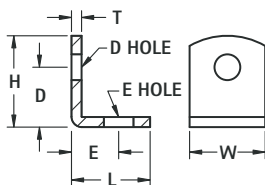
CAT. NO. 7774



MATERIAL: .032 (.81) Brass, Matte Tin Plate

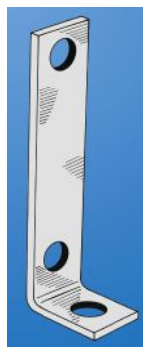
CAT. NO. 7779

UNIVERSAL CLEAR HOLE BRACKETS



CAT. NO.	H	L	W	D	D HOLE DIAMETER	E	E HOLE DIAMETER	T	MATERIAL	FINISH
633	.375 (9.5)	.375 (9.5)	.281 (7.1)	.218 (5.5)	.144 (3.7)	.218 (5.5)	.144 (3.7)	.032 (.81)	Brass	Nickel
613	.390 (9.9)	.453 (11.5)	.375 (9.5)	.234 (5.9)	.147 (3.7)	.299 (7.6)	.128 (3.3)	.032 (.81)	Brass	Nickel
615	.420 (10.7)	.343 (8.7)	.281 (7.1)	.281 (7.1)	.144 (3.7)	.203 (5.2)	.128 (3.3)	.032 (.81)	Brass	Tin
4335	.562 (14.3)	.562 (14.3)	.500 (12.7)	.412 (10.5)	.120 (3.0)	.411 (10.4)	.120 (3.0)	.062 (1.57)	Steel	Nickel
4336	.562 (14.3)	.562 (14.3)	.500 (12.7)	.412 (10.5)	.144 (3.7)	.412 (10.5)	.144 (3.7)	.062 (1.57)	Steel	Nickel
618	.628 (16.0)	.628 (16.0)	.375 (9.5)	.378 (9.6)	.169 (4.3)	.378 (9.6)	.169 (4.3)	.050 (1.27)	Brass	Tin
619	.687 (17.4)	.687 (17.4)	.375 (9.5)	.500 (12.7)	.144 (3.7)	.500 (12.7)	.144 (3.7)	.032 (.81)	Steel	Tin
4326	1.013 (25.7)	.487 (12.4)	.312 (7.9)	.816 (20.7)	.140 (3.6)	.332 (8.4)	.140 (3.6)	.050 (1.27)	Steel	Nickel
620	1.156 (29.4)	.656 (16.7)	.375 (9.5)	.906 (23.0)	.169 (4.3)	.420 (10.7)	.169 (4.3)	.032 (.81)	Steel	Tin

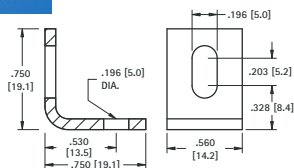
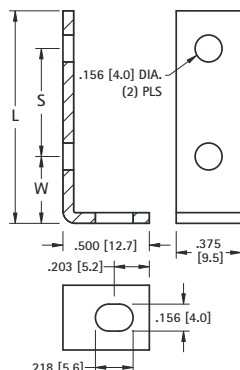
BOARD BRACKETS



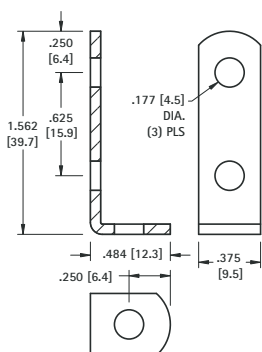
Originally designed for our line of standardized terminal boards; these brackets can also be used in other applications.

MATERIALS: .062 (1.57) Steel, Nickel Plate

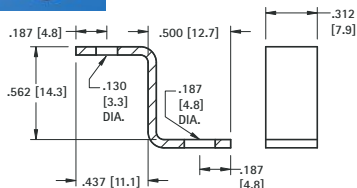
CAT. NO.	W	L	S
1570	.281 (7.1)	1.187 (30.1)	.750 (19.1)
1556	.375 (9.5)	1.625 (41.3)	1.000 (25.4)
1571	.281 (7.1)	1.625 (41.3)	1.187 (30.1)
1567	.375 (9.5)	2.125 (54.0)	1.500 (38.1)
1568	.375 (9.5)	2.625 (66.7)	2.000 (50.8)
1569	.375 (9.5)	3.125 (79.4)	2.500 (63.5)



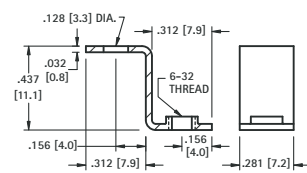
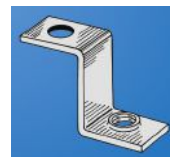
CAT. NO. 4337 **MATERIAL:** .080 (2.03) Aluminum



CAT. NO. 1564 **MATERIAL:** .062 (1.57) Steel, Nickel Plate

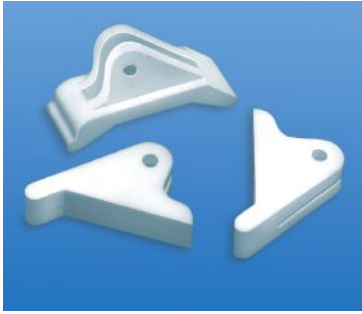


CAT. NO. 4325 **MATERIAL:** .050 (1.27) Steel, Nickel Plate



CAT. NO. 630 **MATERIAL:** .032 (.81) Brass, Tin Plate

LEVER ACTION PC CARD EJECTORS



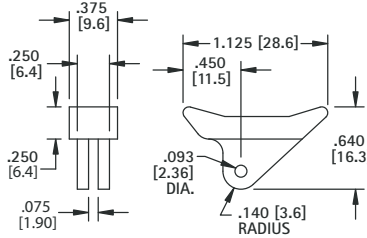
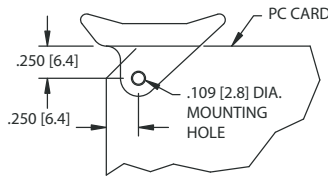
Card ejectors offer a simple and reliable way of installing and ejecting circuit boards. Card ejectors reduce the stress on board connectors by improper removal of board. Ejectors also protect components

on board from damage during removal or installation. Ejectors supplied with stainless steel pin to assure quick assembly of ejector to card.

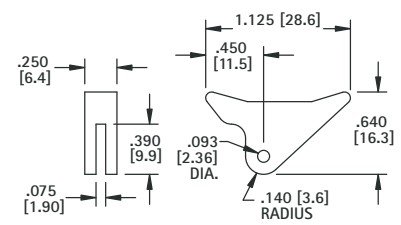
- Designed for .062 (1.57) PC cards
- Level action ejectors aids card insertion and extraction
- Supplied complete with stainless steel spring pin

MATERIAL:
White Nylon 6/6, UL Rated 94V-2

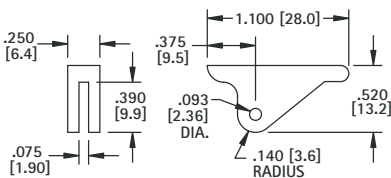
CARD MOUNTING DIMENSIONS



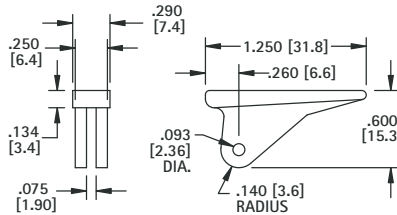
CAT. NO. 8640



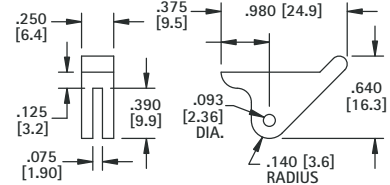
CAT. NO. 8641



CAT. NO. 8642



CAT. NO. 8643



CAT. NO. 8644

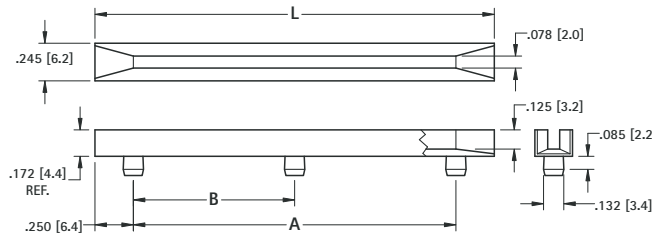
HORIZONTAL TYPE PC BOARD GUIDES



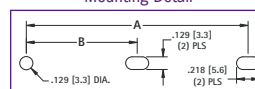
MATERIAL:
Natural Nylon 6/6, UL Rated 94V-2

Guides may be used horizontally or vertically and snap into .125 (3.2) diameter holes. Narrow width allows maximum density and optimum airflow. Simple press-fit, secure installation. No special tools required to install.

- Sturdy Nylon construction
- Mounts into chassis with out tools
- Assures proper alignment of board
- Quick and easy installation of board



Mounting Detail

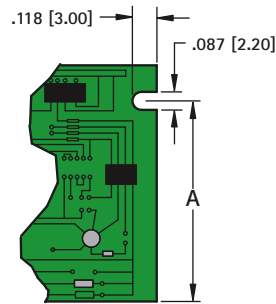


CAT. NO.	L	A	B
8620	2.5 (63.5)	2.0 (50.8)	-
8621	3.0 (76.2)	2.5 (63.5)	-
8622	3.5 (88.9)	3.0 (76.2)	-
8623	4.0 (101.6)	3.5 (88.9)	-
8624	4.5 (114.3)	4.0 (101.6)	-
8625	5.0 (127.0)	4.5 (114.3)	-
8626	5.5 (139.7)	5.0 (127.0)	-
8627	6.0 (152.4)	5.5 (139.7)	-
8628	6.5 (165.1)	6.0 (152.4)	-
8629	7.0 (177.8)	6.5 (165.1)	-
8630	7.0 (177.8)	6.5 (165.1)	3.25 (82.6)
8631	7.5 (190.5)	7.0 (177.8)	-
8632	7.5 (190.5)	7.0 (177.8)	3.50 (88.9)
8633	8.0 (203.2)	7.5 (190.5)	-
8634	8.0 (203.2)	7.5 (190.5)	3.75 (95.3)
8635	8.5 (215.9)	8.0 (203.2)	-
8636	8.5 (215.9)	8.0 (203.2)	4.00 (101.6)

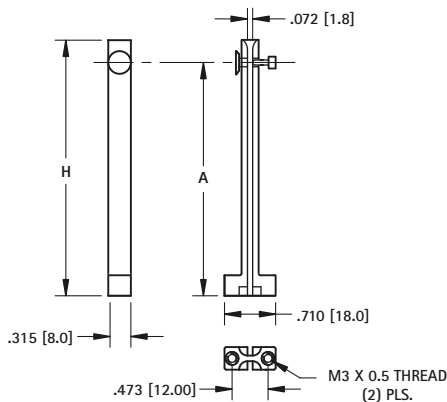
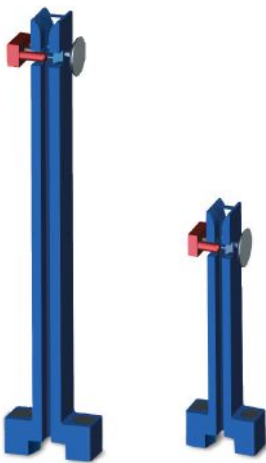
VERTICAL PC BOARD GUIDES

Vertical board guides provide for a quick and easy assembly of circuit boards. Sturdy design assures boards stay square. These guards can be mounted to chassis or directly to a mother board. Mounting holes have brass threaded inserts to assure secure mounting of guide. After bracket is installed, boards are quickly locked into place or released for repair or upgrades. Locking pins at the top of the bracket can be set/released using finger pressure, no tools are required.

- Brass threaded inserts assure sturdy connection to chassis or mother board
- Available for circuit boards 1.970" to 6.300" tall
- Locking pin keeps circuit board locked into place
- M3 mounting screws available
- Supplied with hardware: 2 screws, 2 washers and 2 lock washers
- All brackets use same footprint, no redesign of mounting holes required if changing bracket height



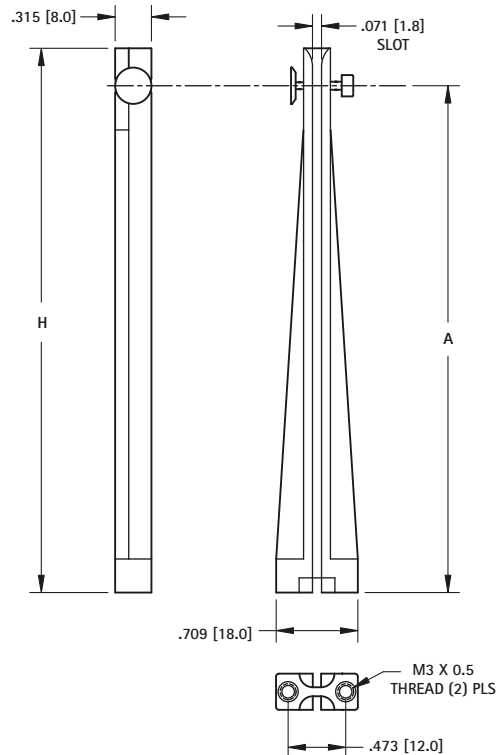
STANDARD



CAT. NO.	H HEIGHT	A LOCK PIN HEIGHT
8645	1.970 (50.0)	1.650 (42.0)
8646	2.560 (65.0)	2.250 (56.5)
8647	3.540 (90.0)	3.200 (81.5)
8648	4.725 (120.0)	4.430 (112.5)

MATERIAL:
Guide: Nylon
Threaded Insert: Brass, Nickel Plate

REINFORCED



MATERIAL:
Guide: Nylon, Glass Filled
Threaded Insert: Brass, Nickel Plate

CAT. NO.	H HEIGHT	A LOCK PIN HEIGHT
8654	4.724 (120.0)	4.410 (112.0)

STANDARD BLANK BRACKETS

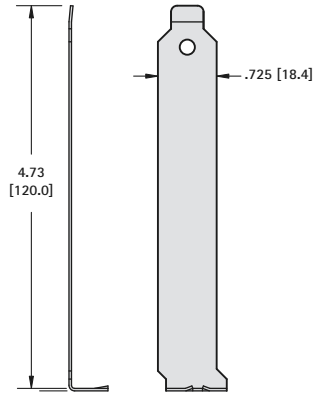


- Brackets supplied as flat blanks or with mounting tabs
- Premium quality
- Designed to fit standard PC Board configurations
- Custom designs can be fabricated to your exact configuration

MATERIAL: Steel, Nickel Plate

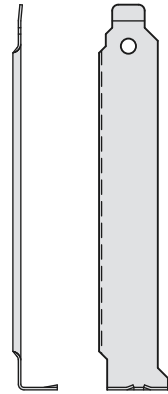
EISA/ISA or PCI

BLANK - FLAT



CAT. NO. 9200

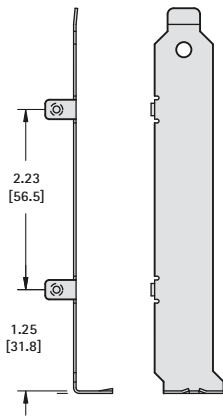
BLANK - REINFORCED



CAT. NO. 9201

EISA/ISA

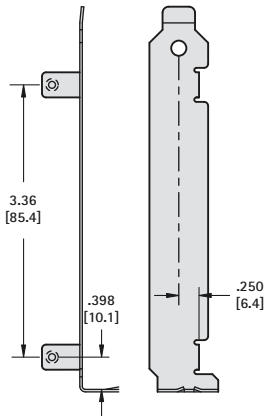
BLANK - WITH MOUNTING TABS



CAT. NO. 9202

PCI

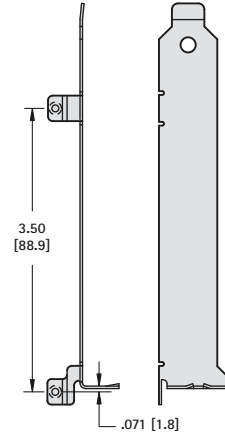
BLANK - WITH MOUNTING TABS



CAT. NO. 9203

EISA/ISA

BLANK - WITH MOUNTING TABS



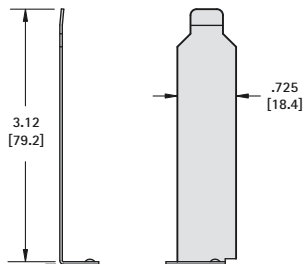
CAT. NO. 9205

LOW PROFILE BLANK BRACKETS



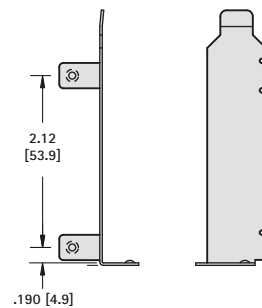
EISA/ISA or PCI

BLANK - FLAT

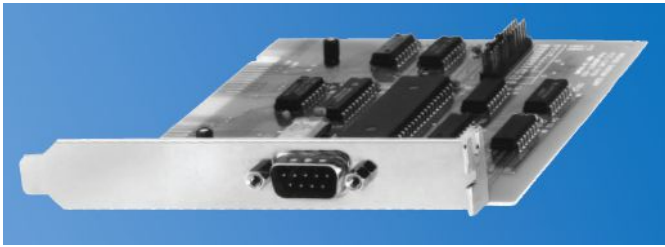


CAT. NO. 9230

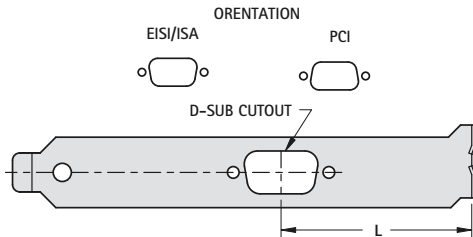
BLANK - WITH MOUNTING TABS



CAT. NO. 9231

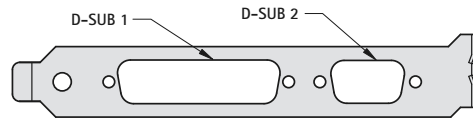


D-SUB



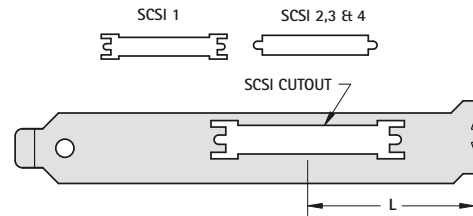
CAT. NO.	Orientation	Length	# Pins
9200-1	EISA/ISA	1.96 (49.9)	9 Pin
9200-2	PCI	2.20 (55.9)	9 Pin
9200-16	EISA/ISA	1.07 (27.2)	9 Pin
9200-3	EISA/ISA	2.95 (75.0)	15 Pin
9200-11	EISA/ISA	2.85 (72.4)	15 Pin
9200-4	EISA/ISA	2.81 (71.3)	25 Pin
9200-5	EISA/ISA	2.25 (57.2)	37 Pin
9207-14	EISA/ISA	1.90 (48.4)	50 Pin

MULTIPLE D-SUB - EISA/ISA



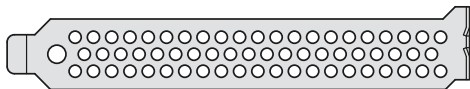
CAT. NO.	D SUB 1	D SUB 2
9200-12	15 Pin	15 Pin
9200-13	25 Pin	15 Pin
9200-15	9 Pin	9 Pin
9200-17	25 Pin	9 Pin

SCSI



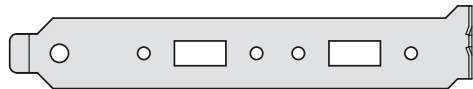
CAT. NO.	Shape	No. Pins
9200-6	SCSI 1	50 Pin
9200-7	SCSI 1	68 Pin
9200-8	SCSI 2,3 & 4	50 Pin
9200-9	SCSI 2,3 & 4	68 Pin

VENT



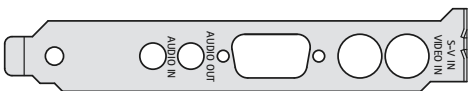
CAT. NO. 9200-19

USB I/O CARD - EISA/ISA or PCI



CAT. NO. 9200-10

VIDEO CARD - EISA/ISA



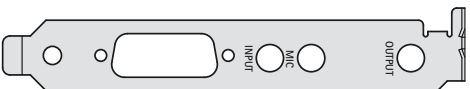
CAT. NO. 9201-1

NETWORK CARD - PCI



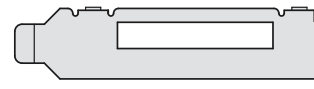
CAT. NO. 9203-2

SOUND CARD - EISA/ISA



CAT. NO. 9204-1

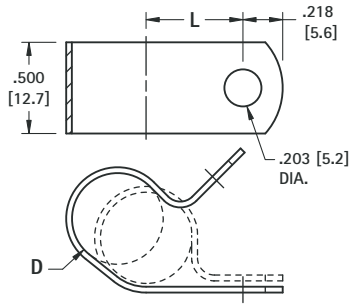
USB I/O CARD - LOW PROFILE



CAT. NO. 9231-1

STEEL CABLE CLAMPS

Ideal for securing, grounding and routing cable, wiring, piping, tubing, components and fibre optics.

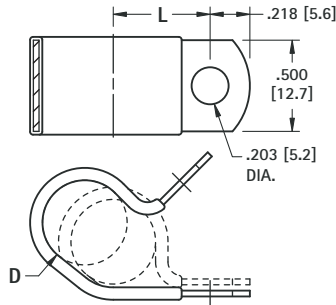


MATERIAL: .032 (.81) Steel, Zinc Plate

CAT. NO.	D FOR DIA.	L CTR TO CTR
8100	.187 (4.7)	.375 (9.5)
8101	.250 (6.4)	.406 (10.3)
8102	.312 (7.9)	.437 (11.1)
8103	.375 (9.5)	.468 (11.9)
8104	.437 (11.1)	.500 (12.7)
8105	.500 (12.7)	.531 (13.5)
8106	.562 (14.4)	.562 (14.3)
8107	.625 (15.9)	.594 (15.1)
8108	.687 (17.4)	.625 (15.9)
8109	.750 (19.0)	.656 (16.7)
8110	.812 (20.6)	.687 (17.4)
8111	.875 (22.2)	.718 (18.2)
8112	.937 (23.8)	.750 (19.1)
8113	1.00 (25.4)	.781 (19.8)

INSULATED STEEL CABLE CLAMPS

Ideal for securing, insulating and routing cable, wiring, piping, tubing, components and fibre optics.

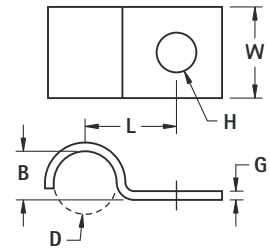
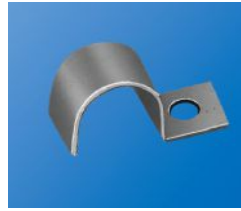


MATERIAL: .032 (.81) Steel, Zinc Plate
Cushion: Black Vinyl

CAT. NO.	D FOR DIA.	L CTR TO CTR
8121	.187 (4.7)	.406 (10.3)
8122	.250 (6.4)	.437 (11.1)
8123	.312 (7.9)	.468 (11.9)
8124	.375 (9.5)	.500 (12.7)
8125	.437 (11.1)	.531 (13.5)
8126	.500 (12.7)	.562 (14.3)
8127	.562 (14.3)	.594 (15.1)
8128	.625 (15.9)	.625 (15.9)
8129	.687 (17.4)	.656 (16.7)
8130	.750 (19.1)	.687 (17.4)
8131	.812 (20.6)	.718 (18.2)
8132	.875 (22.2)	.750 (19.1)
8133	.937 (23.8)	.781 (19.8)
8134	1.000 (25.4)	.812 (20.6)

STEEL HALF CLAMPS

Ideal for securing, grounding and routing cable, wiring, piping, tubing, components and fibre optics.

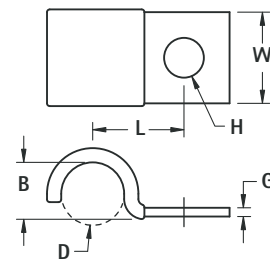


MATERIAL: Steel, Zinc Plate

CAT. NO.	D FOR DIA.	H HOLE DIA.	L CTR TO CTR	B	G THICK	W WIDTH
8140	.125 (3.2)	.218 (5.5)	.437 (11.1)	.125 (3.2)	.032 (.81)	.500 (12.7)
8141	.187 (4.7)	.218 (5.5)	.437 (11.1)	.156 (4.0)		
8142	.250 (6.4)	.218 (5.5)	.437 (11.1)	.187 (4.7)		
8143	.312 (7.9)	.218 (5.5)	.500 (12.7)	.250 (6.4)	.048 (1.22)	.500 (12.7)
8144	.375 (9.5)	.218 (5.5)	.531 (13.5)	.312 (7.9)		
8145	.437 (11.1)	.218 (5.5)	.562 (14.3)	.375 (9.5)	.060 (1.52)	.625 (15.9)
8146	.500 (12.7)	.218 (5.5)	.625 (15.9)	.437 (11.1)		
8147	.562 (14.3)	.218 (5.5)	.687 (17.4)	.500 (12.7)		
8148	.625 (15.9)	.218 (5.5)	.750 (19.1)	.562 (14.3)	.060 (1.52)	.625 (15.9)
8149	.687 (17.4)	.218 (5.5)	.812 (20.6)	.625 (15.9)		
8150	.750 (19.1)	.218 (5.5)	.812 (20.6)	.687 (17.4)	.060 (1.52)	.625 (15.9)
8151	.812 (20.6)	.218 (5.5)	.875 (22.2)	.750 (19.1)		
8152	.875 (22.2)	.281 (7.1)	.937 (23.8)	.812 (20.6)		
8153	.937 (23.8)	.281 (7.1)	.968 (24.6)	.812 (20.6)	.060 (1.52)	.750 (19.1)
8154	1.000 (25.4)	.281 (7.1)	1.000 (25.4)	.937 (23.8)		

INSULATED STEEL HALF CLAMPS

Ideal for securing, insulating and routing cable, wiring, piping, tubing, components and fibre optics.



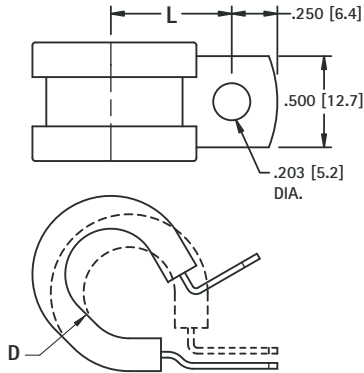
MATERIAL: Steel, Zinc Plate
Cushion: Black Vinyl

CAT. NO.	D FOR DIA.	H HOLE DIA.	L CTR TO CTR	B	G THICK	W WIDTH
8160	.187 (4.7)	.218 (5.5)	.437 (11.1)	.187 (4.7)	.032 (.81)	.500 (12.7)
8161	.250 (6.4)	.218 (5.5)	.500 (12.7)	.250 (6.4)		
8162	.312 (7.9)	.218 (5.5)	.531 (13.5)	.312 (7.9)		
8163	.375 (9.5)	.218 (5.5)	.562 (14.3)	.375 (9.5)	.048 (1.22)	.625 (15.9)
8164	.437 (11.1)	.218 (5.5)	.625 (15.9)	.437 (11.1)		
8165	.500 (12.7)	.218 (5.5)	.687 (17.4)	.500 (12.7)	.060 (1.52)	.625 (15.9)
8166	.562 (14.3)	.218 (5.5)	.750 (19.1)	.562 (14.3)		
8167	.625 (15.9)	.218 (5.5)	.812 (20.6)	.625 (15.9)		
8168	.687 (17.4)	.218 (5.5)	.812 (20.6)	.687 (17.4)	.060 (1.52)	.625 (15.9)
8169	.750 (19.1)	.218 (5.5)	.875 (22.2)	.750 (19.1)		
8170	.812 (20.6)	.281 (7.1)	.937 (23.8)	.812 (20.6)		
8171	.875 (22.2)	.281 (7.1)	.968 (24.6)	.812 (20.6)	.060 (1.52)	.750 (19.1)
8172	.937 (23.8)	.281 (7.1)	1.000 (25.4)	.937 (23.8)		
8173	1.000 (25.4)	.281 (7.1)	1.062 (27.0)	1.000 (25.4)		

CUSHIONED CABLE CLAMPS



Ideal for securing in rugged applications. These cushioned cable clamps secure tightly and protect against shock and vibration.

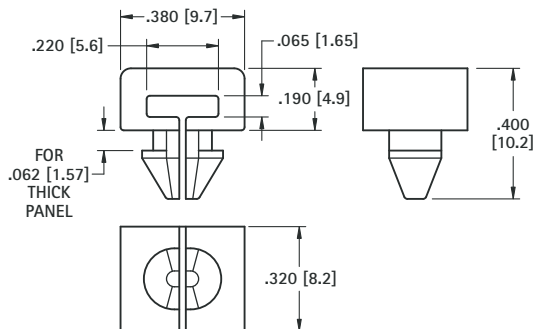


MATERIAL: .032 (0.81) Stainless Steel
Cushion: EPDM Rubber

CAT. NO.	D FOR DIA.	L CTR TO CTR
8090	.250 (6.4)	.711 (18.1)
8091	.375 (9.5)	.500 (12.7)
8092	.500 (12.7)	.562 (14.3)
8093	.625 (15.9)	.718 (18.2)
8094	.750 (19.1)	.781 (19.8)
8095	.875 (22.2)	.843 (21.4)
8096	1.000 (25.4)	.906 (23.0)

CABLE TIE ROUTING CLIP

These clips snap into PC Boards or Panel chassis and are ideal for securing cable wiring, piping, tubing, components and fibre optics when used with cable ties.



Recommended Mtg. Hole .187 (4.8) diameter.

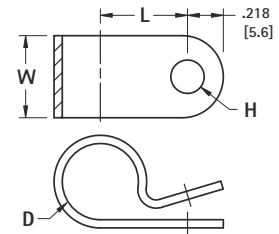
MATERIAL: Nylon 6/6, UL Rated 94V-2

CAT. NO. 8860

NYLON CABLE CLAMPS

Ideal for securing, insulating and routing cable wiring, piping, tubing, components and fibre optics.

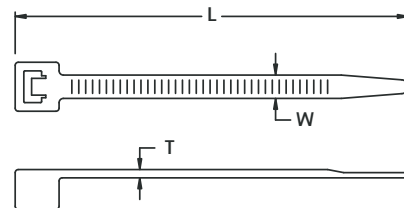
MATERIAL: .050 (1.27) Nylon 6/6, White



CAT. NO.	D FOR DIA.	L CTR TO CTR	W WIDTH	H HOLE
7620	.125 (3.2)	.325 (8.3)	.375 (9.5)	.140 (3.6)
7621	.125 (3.2)	.325 (8.3)	.375 (9.5)	.203 (5.2)
7622	.187 (4.7)	.380 (9.7)	.375 (9.5)	.140 (3.6)
7623	.187 (4.7)	.380 (9.7)	.375 (9.5)	.203 (5.2)
7624	.250 (6.4)	.410 (10.4)	.375 (9.5)	.140 (3.6)
7625	.250 (6.4)	.410 (10.4)	.375 (9.5)	.203 (5.2)
7626	.312 (7.9)	.445 (11.3)	.375 (9.5)	.140 (3.6)
7627	.312 (7.9)	.445 (11.3)	.375 (9.5)	.203 (5.2)
7628	.375 (9.5)	.475 (12.1)	.375 (9.5)	.140 (3.6)
7629	.375 (9.5)	.475 (12.1)	.375 (9.5)	.203 (5.2)
7630	.437 (11.1)	.525 (13.3)	.375 (9.5)	.140 (3.6)
7631	.437 (11.1)	.525 (13.3)	.375 (9.5)	.203 (5.2)
7632	.500 (12.7)	.550 (14.0)	.375 (9.5)	.140 (3.6)
7633	.500 (12.7)	.550 (14.0)	.375 (9.5)	.203 (5.2)
7634	.562 (14.3)	.625 (15.9)	.500 (12.7)	.203 (5.2)
7635	.625 (15.9)	.660 (16.8)	.500 (12.7)	.203 (5.2)
7636	.750 (19.1)	.785 (19.9)	.500 (12.7)	.203 (5.2)
7637	.875 (22.2)	.845 (21.5)	.500 (12.7)	.203 (5.2)
7638	1.000 (25.4)	.910 (23.1)	.500 (12.7)	.203 (5.2)
7639	1.125 (28.6)	.970 (24.6)	.500 (12.7)	.203 (5.2)
7640	1.250 (31.8)	1.060 (26.9)	.500 (12.7)	.203 (5.2)

NYLON CABLE TIES

Popular sizes and strengths to meet common cable tie requirements. Injection molded with one piece construction for strength and reliability. Easily installed by hand. Optional installation tool available, tightens and flush cuts cable tie.

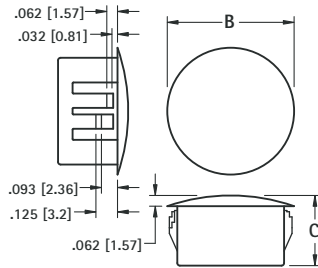
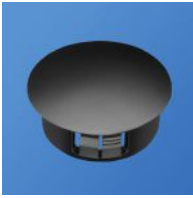


MATERIAL: Natural Nylon 6/6, UL Rated 94V-2

CAT. NO.	TENSILE STRENGTH (Min. Bundle)	FOR BUNDLE DIA. (Max.)	L LENGTH (Approx.)	W WIDTH (Approx.)	T THICKNESS (Approx.)
8865	18 lbs	1.000 (25.4)	4.250 (108.0)	.100 (2.54)	.045 (1.14)
8866	18 lbs	2.000 (50.8)	8.000 (203.2)	.100 (2.54)	.045 (1.14)
8867	40 lbs	1.250 (31.8)	6.000 (152.4)	.140 (3.56)	.050 (1.27)
8868	50 lbs	1.750 (44.5)	7.500 (190.5)	.190 (4.83)	.055 (1.40)
8869	120 lbs	4.000 (101.6)	14.500 (368.3)	.190 (4.83)	.055 (1.40)
8870	Hand Operated Cable Tie Installation Tool for 18lb to 50lb Ties				

NYLON HOLE PLUGS

Closes unused chassis holes quickly and economically. Plugs are abrasion and vibration resistant.

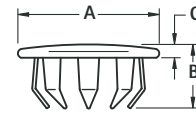


MATERIAL: Nylon 6/6, Matte Finish, Black

CAT. NO.	HOLE DIAMETER	PANEL THICK MAX	B	C
8600	.250 (6.4)	.062 (1.57)	.312 (7.9)	.312 (7.9)
8601	.312 (7.9)	.062 (1.57)	.375 (9.5)	.312 (7.9)
8602	.375 (9.5)	.125 (3.2)	.468 (11.9)	.406 (10.3)
8603	.500 (12.7)	.125 (3.2)	.578 (14.7)	.406 (10.3)
8604	.625 (15.9)	.125 (3.2)	.734 (18.6)	.406 (10.3)
8605	.750 (19.1)	.125 (3.2)	.921 (23.4)	.406 (10.3)
8606	.875 (22.2)	.125 (3.2)	1.015 (25.8)	.453 (11.5)
8607	1.000 (25.4)	.125 (3.2)	1.203 (30.6)	.453 (11.5)
8608	1.125 (28.6)	.125 (3.2)	1.218 (30.9)	.453 (11.5)
8609	1.250 (31.8)	.125 (3.2)	1.375 (34.9)	.453 (11.5)
8610	1.375 (34.9)	.125 (3.2)	1.500 (38.1)	.453 (11.5)
8611	1.500 (38.1)	.125 (3.2)	1.671 (42.4)	.453 (11.5)

STEEL HOLE PLUGS

Excellent spring retention. Plugs will cover chassis holes, wiring outlets, access holes or unused openings.

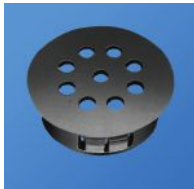


MATERIAL: Steel, Nickel Plate

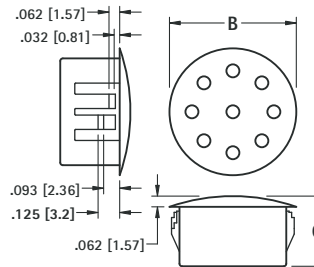
CAT. NO.	HOLE DIAMETER	PANEL THICKNESS	A	B	C	PRONGS
7600	.250 (6.4)	.031-.062 (.81-1.57)	.406 (10.3)	.234 (5.9)	.062 (1.57)	6
7601	.312 (7.9)	.047-.078 (1.19-1.98)	.437 (11.1)	.250 (6.4)	.062 (1.57)	6
7602	.375 (9.5)	.047-.062 (1.19-1.57)	.500 (12.7)	.234 (5.9)	.062 (1.57)	6
7603	.500 (12.7)	.031-.062 (.81-1.57)	.656 (16.7)	.281 (7.1)	.078 (1.98)	8
7604	.625 (15.9)	.062-.093 (1.57-2.36)	.812 (20.6)	.296 (7.5)	.078 (1.98)	8
7605	.750 (19.1)	.062-.093 (1.5-2.36)	.921 (23.4)	.296 (7.5)	.078 (1.98)	12
7606	.875 (22.2)	.062-.093 (1.57-2.36)	1.062 (27.0)	.296 (7.5)	.062 (1.57)	12
7607	1.000 (25.4)	.062-.156 (1.57-3.9)	1.140 (29.0)	.328 (8.3)	.093 (2.36)	12
7608	1.125 (28.6)	.031-.125 (.79-3.2)	1.312 (33.3)	.343 (8.7)	.093 (2.36)	12
7609	1.250 (31.8)	.062-.093 (1.57-2.36)	1.437 (36.5)	.343 (8.7)	.093 (2.36)	12
7610	1.375 (34.9)	.031-.125 (.79-3.2)	1.562 (39.7)	.406 (10.3)	.078 (1.98)	12
7611	1.500 (38.1)	.031-.062 (.79-1.57)	1.640 (41.7)	.406 (10.3)	.093 (2.36)	12

NYLON VENT PLUGS

Used to cover chassis holes while allowing air flow for ventilation. Snaps into .032 (.81) to .125 (3.2) thick panels.



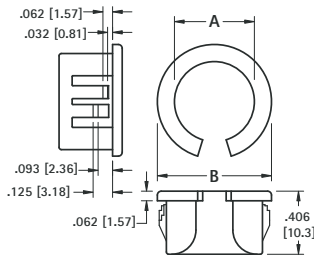
MATERIAL: Nylon 6/6, Matte Finish, Black



CAT. NO.	HOLE DIAMETER	B	C
8612	.875 (22.2)	1.015 (25.8)	.453 (11.5)
8613	1.000 (25.4)	1.218 (30.9)	.453 (11.5)

NYLON SPLIT BUSHINGS

Designed to be assembled into holes that already contain wire or cable. Versatile bushing can be used on all chassis from .032 (.81) to .125 (3.2).

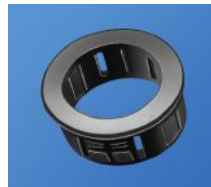


MATERIAL: Nylon 6/6, Black

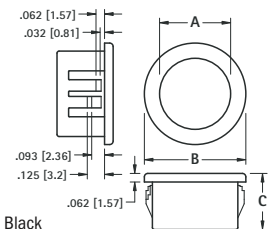
CAT. NO.	HOLE SIZE REQUIRED	A INSIDE DIAMETER	B HEAD DIAMETER
8490	.375 (9.5)	.265 (6.7)	.421 (10.7)
8491	.500 (12.7)	.312 (7.9)	.562 (14.3)
8492	.562 (14.3)	.390 (9.9)	.640 (16.3)
8493	.625 (15.9)	.453 (11.5)	.687 (17.4)
8494	.750 (19.1)	.546 (13.9)	.796 (20.2)
8495	.875 (22.2)	.671 (17.0)	.921 (23.4)
8496	1.000 (25.4)	.796 (20.2)	1.062 (27.0)

NYLON INSULATING BUSHINGS

Snaps into panel hole to provide protection for wire, cable and tubing from sharp uneven edges.



MATERIAL: Nylon 6/6, Black



CAT. NO.	HOLE SIZE REQUIRED	MAXIMUM CHASSIS THICKNESS	A INSIDE DIAMETER	B HEAD DIAMETER	C OVERALL HEIGHT
8470	.250 (6.4)	.062 (1.57)	.125 (3.2)	.312 (7.9)	.312 (7.9)
8471	.312 (7.9)	.062 (1.57)	.187 (4.7)	.375 (9.5)	.312 (7.9)
8472	.375 (9.5)	.125 (3.2)	.250 (6.4)	.468 (11.9)	.406 (10.3)
8473	.437 (11.1)	.125 (3.2)	.312 (7.9)	.531 (13.5)	.406 (10.3)
8474	.500 (12.7)	.125 (3.2)	.375 (9.5)	.578 (14.7)	.406 (10.3)
8475	.562 (14.3)	.125 (3.2)	.437 (11.1)	.656 (16.7)	.406 (10.3)
8476	.625 (15.9)	.125 (3.2)	.500 (12.7)	.718 (18.2)	.406 (10.3)
8477	.750 (19.1)	.125 (3.2)	.562 (14.3)	.843 (21.4)	.406 (10.3)
8478	.875 (22.2)	.125 (3.2)	.625 (15.9)	.953 (24.2)	.453 (11.5)
8479	1.000 (25.4)	.125 (3.2)	.750 (19.1)	1.125 (28.6)	.453 (11.5)
8480	1.187 (30.1)	.125 (3.2)	.937 (23.8)	1.312 (33.3)	.453 (11.5)
8481	1.250 (31.8)	.125 (3.2)	.937 (23.8)	1.359 (34.5)	.453 (11.5)
8482	1.375 (34.9)	.125 (3.2)	1.000 (25.4)	1.468 (37.3)	.453 (11.5)
8483	1.500 (38.1)	.125 (3.2)	1.062 (27.0)	1.609 (40.9)	.453 (11.5)
8484	1.750 (44.5)	.125 (3.2)	1.375 (34.9)	1.875 (47.6)	.453 (11.5)
8485	2.000 (50.8)	.125 (3.2)	1.625 (41.3)	2.125 (54.0)	.453 (11.5)
8486	2.500 (63.5)	.250 (6.4)	1.968 (50.0)	2.656 (67.5)	.718 (18.2)

ANTI-VIBRATION GROMMETS

Anti-Vibration grommets are designed for noise suppression in office or lab equipment. Additionally, they isolate sensitive instrumentation from unpredictable vibration and shock. The

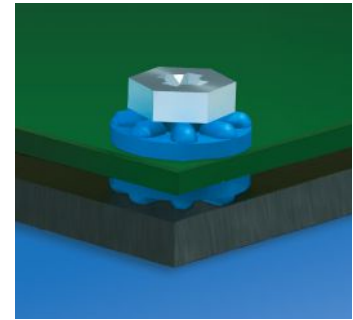
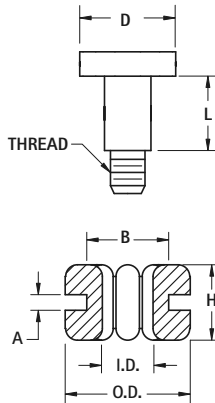
fingers of the grommets provide the flex needed to dampen unwanted noise and vibration. Specially designed shoulder screws are designed to provide the correct spacing.



ROUND HEAD

HEX HEAD

Screw supplied unassembled



MATERIAL:
Isolator: EPDM Rubber
Shoulder Screw: Steel, Nickel Plate

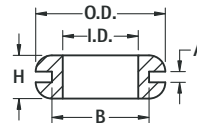
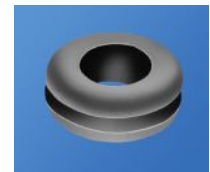
BLACK CAT. NO.	BLUE CAT. NO.	O.D. OUTSIDE DIAMETER	I.D. INSIDE DIAMETER	H HEIGHT	A PANEL THICK	B MTG. HOLE	SHOULDER SCREW			
							LENGTH (L)	THREAD	D	HEAD
765	766	.379 (9.6)	.154 (3.9)	.228 (5.8)	.063 (1.6)	.250 (6.4)	.189 (4.8)	6-32	.250 (6.4)	Hex
769	770	.377 (9.6)	.161 (4.1)	.298 (7.6)	.125 (3.2)	.250 (6.4)	.252 (6.4)	6-32	.300 (7.6)	
775	776	.551 (14.0)	.191 (4.9)	.319 (8.1)	.063 (1.6)	.375 (9.5)	.318 (8.0)	6-32	.394 (10.0)	Round
767	768	.379 (9.6)	.154 (3.9)	.228 (5.8)	.047 (1.2)	.250 (6.4)	.197 (5.0)	M3	.394 (10.0)	
771	772	.411 (11.2)	.181 (4.6)	.209 (5.3)	.031 (0.8)	.315 (8.0)	.197 (5.0)	M3	.394 (10.0)	
773	774	.551 (14.0)	.191 (4.9)	.291 (7.4)	.047 (1.2)	.375 (9.5)	.252 (6.4)	M3	.394 (10.0)	

RUBBER GROMMETS

CAT. NO.	I.D. INSIDE DIAMETER	B MTG. HOLE	A PANEL THICKNESS	O.D. OUTSIDE DIAMETER	H HEIGHT
730	.125 (3.2)	.187 (4.7)	.062 (1.57)	.312 (7.9)	.187 (4.7)
733	.125 (3.2)	.250 (6.4)	.062 (1.57)	.343 (8.7)	.187 (4.7)
734	.125 (3.2)	.437 (11.1)	.062 (1.57)	.625 (15.9)	.187 (4.7)
735	.125 (3.2)	.375 (9.5)	.093 (2.36)	.500 (12.7)	.312 (7.9)
736	.187 (4.7)	.312 (7.9)	.062 (1.57)	.437 (11.1)	.218 (5.5)
737	.187 (4.7)	.281 (7.2)	.093 (2.36)	.437 (11.1)	.218 (5.5)
738	.250 (6.4)	.437 (11.1)	.062 (1.57)	.625 (15.9)	.187 (4.7)
739	.250 (6.4)	.375 (9.5)	.062 (1.57)	.562 (14.3)	.250 (6.4)
740	.250 (6.4)	.375 (9.5)	.093 (2.36)	.500 (12.7)	.250 (6.4)
741	.312 (7.9)	.562 (14.3)	.062 (1.57)	.812 (20.6)	.312 (7.9)
742	.312 (7.9)	.437 (11.1)	.062 (1.57)	.625 (15.9)	.281 (7.1)
743	.312 (7.9)	.437 (11.1)	.093 (2.36)	.625 (15.9)	.312 (7.9)
744	.375 (9.5)	.625 (15.9)	.062 (1.57)	.875 (22.2)	.312 (7.9)
745	.375 (9.5)	.500 (12.7)	.062 (1.57)	.625 (15.9)	.250 (6.4)
732	.437 (11.1)	.562 (14.3)	.062 (1.57)	.750 (19.1)	.250 (6.4)
746	.437 (11.1)	.687 (17.4)	.062 (1.57)	.937 (23.8)	.312 (7.9)
747	.500 (12.7)	.812 (20.6)	.062 (1.57)	1.062 (27.0)	.312 (7.9)
748	.500 (12.7)	1.250 (31.8)	.062 (1.57)	1.500 (38.1)	.250 (6.4)
749	.500 (12.7)	.750 (19.1)	.093 (2.36)	.968 (24.6)	.281 (7.1)
750	.562 (14.3)	.812 (20.6)	.062 (1.57)	1.062 (27.0)	.312 (7.9)
752	.625 (15.9)	.875 (22.2)	.062 (1.57)	1.125 (28.6)	.312 (7.9)
753	.625 (15.9)	1.250 (31.8)	.062 (1.57)	1.500 (38.1)	.250 (6.4)
755	.750 (19.1)	1.062 (27.0)	.062 (1.57)	1.375 (34.9)	.375 (9.5)
756	.750 (19.1)	1.437 (36.5)	.062 (1.57)	1.812 (46.0)	.375 (9.5)
757	.875 (22.2)	1.250 (31.8)	.062 (1.57)	1.625 (41.3)	.437 (11.1)

Ideal for electrical insulation and mechanical damping.

MATERIAL: Rubber, BUNA N

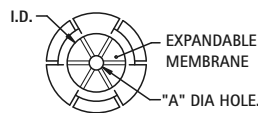
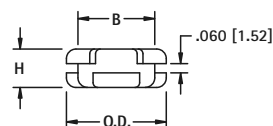


"UNIVERSAL" RUBBER GROMMET

- Designed to adjust to different cable diameters from .125 (3.2) to .312 (7.9)
- Self-adjusting membrane forms a dust resistant seal

MATERIAL: Thermoplastic Rubber, Black

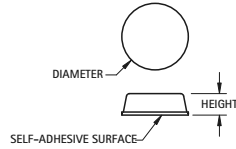
CAT. NO.	O.D. OUTSIDE	I.D. INSIDE DIA.	A DIA. HOLE	B MTG HOLE	H HEIGHT
777	.650 (16.32)	.380 (9.7)	.090 (2.3)	.500 (12.7)	.250 (6.4)
778	1.25 (31.8)	.810 (20.6)	.160 (4.0)	1.000 (25.4)	.370 (9.4)



ADHESIVE BUMPERS

Applies quickly and easily. Prevents nicks, scratches, scuffs, vibration, slippage and noise. Easy peel and stick mounting. Crack resistant. High coefficient of friction. Sold in sheets.

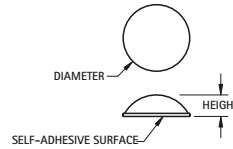
FLAT



MATERIAL: Molded Polyurethane

BLACK CAT. NO.	CLEAR CAT. NO.	DIAMETER	HEIGHT	PARTS/SHEET
780-B	780-C	.375 (9.5)	.125 (3.2)	300
781-B	781-C	.500 (12.7)	.060 (1.5)	200
782-B	782-C	.500 (12.7)	.140 (3.6)	200

DOMED



MATERIAL: Molded Polyurethane

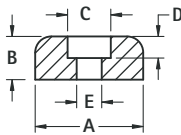
BLACK CAT. NO.	CLEAR CAT. NO.	DIAMETER	HEIGHT	PARTS/SHEET
783-B	783-C	.250 (6.4)	.062 (1.6)	578
784-B	784-C	.335 (8.5)	.085 (2.2)	450
785-B	785-C	.440 (11.2)	.200 (5.1)	242

RECESSED BUMPERS

Provides excellent traction and shock absorbing qualities. available with or without Mold-in Washers.



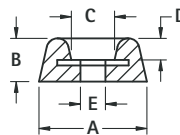
FIG. 1



MATERIAL: Rubber, BUNA S (Figs. 1 & 2), EPDN



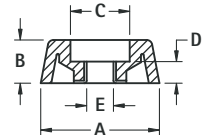
FIG. 2 Mold-In Washer



MATERIAL: Rubber, BUNA S (Figs. 1 & 2), EPDN



FIG. 3 Mold-In Washer



MATERIAL: EPDN Rubber

CAT. NO.	FIG.	A	B	C	D	E	SCREW SIZE
720	1	.500 (12.7)	.250 (6.4)	.250 (6.4)	.187 (4.7)	.125 (3.2)	# 4
721	1	.625 (15.9)	.312 (7.9)	.250 (6.4)	.187 (4.7)	.125 (3.2)	# 4
722	1	.718 (18.2)	.437 (11.1)	.250 (6.4)	.218 (5.5)	.125 (3.2)	# 4
723	2	.937 (23.8)	.375 (9.5)	.375 (9.5)	.218 (5.5)	.187 (4.7)	# 8
724*	3	.687 (17.4)	.250 (6.4)	.343 (8.7)	.125 (3.2)	.155 (3.9)	# 6
725*	3	.875 (22.2)	.312 (7.9)	.406 (10.3)	.187 (4.7)	.187 (4.7)	# 8
726*	3	1.062 (27.0)	.437 (11.1)	.468 (11.9)	.234 (5.9)	.200 (5.1)	# 10
727	3	.562 (14.3)	.375 (9.5)	.218 (5.5)	.187 (4.7)	.115 (2.9)	# 4
728	3	.750 (19.1)	.437 (11.1)	.265 (6.7)	.250 (6.4)	.148 (3.8)	# 6
729	3	.937 (23.8)	.625 (15.9)	.359 (9.1)	.328 (8.3)	.174 (4.4)	# 8

*Grey - all others Black

SELF-LOCKING BUMPER FOOT



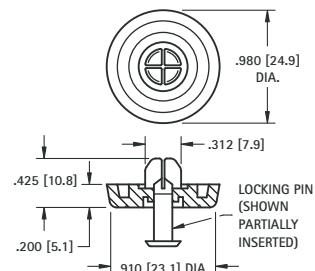
MATERIAL:

Foot: Santoprene, Black **Pin:** Polypropylene, Black

Mounting Hole: .305 (7.8) diameter

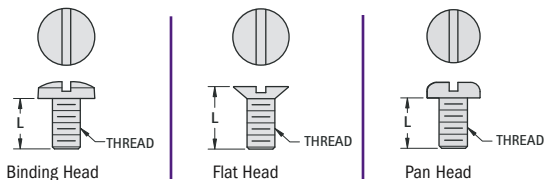
CAT. NO. 717

- A unique easy-to-install self-locking bumper foot
- Two piece assembly, furnished pre-assembled
- Vibration absorbing and skid resistant
- Mounts without screws or tools



MACHINE SCREWS

Choice of: Steel, Zinc Plate • Nylon: 6/6, UL Rated 94V-2



PAN HEAD METRIC		
STEEL CAT. NO.	L	NYLON 6/6 CAT. NO.
M2.5 THREAD		
29300	4.00	29330
29301	6.00	29331
29304	12.00	29334
29306	16.00	29336
M3 THREAD		
29311	6.00	29341
29314	12.00	29344
29316	16.00	29346
29318	25.00	29348
M4 THREAD		
29321	6.00	29351
29324	12.00	29354
29326	16.00	29356
29328	25.00	29358

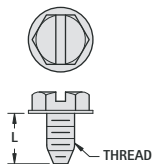
THREAD	LENGTH	BINDING HEAD		FLAT HEAD		PAN HEAD	
		STEEL CAT. NO.	NYLON CAT. NO.	STEEL CAT. NO.	NYLON CAT. NO.	STEEL CAT. NO.	NYLON CAT. NO.
2-56	.250 (6.4)	9455	—	9555	—	9355	—
	.500 (12.7)	9456	—	9556	—	9356	—
	.750 (19.1)	9457	—	9557	—	9357	—
4-40	.250 (6.4)	9400	9427	9500	9527	9300	9327
	.375 (9.5)	9401	9428	9501	9528	9301	9328
	.500 (12.7)	9402	9429	9502	9529	9302	9329
	.625 (15.9)	9403	9430	9503	9530	9303	9330
	.750 (19.1)	9404	9431	9504	9531	9304	9331
	1.000 (25.4)	9405	9432	9505	9532	9305	9332
6-32	.187 (4.7)	9406	9433	9506	9533	9306	9333
	.250 (6.4)	9407	9434	9507	9534	9307	9334
	.375 (9.5)	9408	9435	9508	9535	9308	9335
	.500 (12.7)	9409	9436	9509	9536	9309	9336
	.625 (15.9)	9410	9437	9510	9537	9310	9337
	.750 (19.1)	9411	9438	9511	9538	9311	9338
	1.000 (25.4)	9412	9439	9512	9539	9312	9339
	1.250 (31.8)	9413	9440	9513	9540	9313	9340
2.000 (50.8)	9414	9441	9514	9541	9314	9341	
8-32	.250 (6.4)	9416	9443	9516	9543	9316	9343
	.375 (9.5)	9417	9444	9517	9544	9317	9344
	.500 (12.7)	9418	9445	9518	9545	9318	9345
	.625 (15.9)	9419	9446	9519	9546	9319	9346
	.750 (19.1)	9420	9447	9520	9547	9320	9347
	1.000 (25.4)	9421	9448	9521	9548	9321	9348
10-32	1.250 (31.8)	9422	9449	9522	9549	9322	9349
	.500 (12.7)	9423	9450	9523	9550	9323	9350
	.750 (19.1)	9424	9451	9524	9551	9324	9351
	1.000 (25.4)	9425	9452	9525	9552	9325	9352
1.500 (38.1)	9426	9453	9526	9553	9326	9353	

SELF TAPPING SCREWS



• Slotted drive, hex head

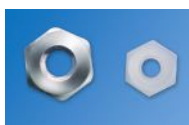
Highly versatile screw, used in wood, fiberglass and metal where machine thread inserts are not furnished.



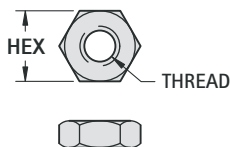
THREAD	LENGTH	CAT. NO.
No. 4	.375 (9.5)	9575
	.500 (12.7)	9576
No. 6	.375 (9.5)	9577
	.500 (12.7)	9578
No. 8	.375 (9.5)	9579
	.500 (12.7)	9580
No. 10	.375 (9.5)	9581
	.500 (12.7)	9581

MATERIAL: Steel, Zinc Plate (Non-RoHS Compliant)
Note: RoHS Compliant finishes available on special order

HEX MACHINE NUTS



MATERIAL: Nylon 6/6 UL Rated 94V-2
Steel, Zinc Plate



IMPERIAL			
STEEL CAT. NO.	NYLON CAT. NO.	HEX	THREAD
4694	—	.187 (4.7)	4-40
9600	9605	.250 (6.4)	6-32
4701	—	.250 (6.4)	6-32
9602	9606	.312 (7.9)	8-32
9603	—	.250 (6.4)	8-32
9604	9607	.312 (7.9)	10-32
4705	9608	.375 (9.5)	.250-28
4713	—	.430 (10.9)	.312-24
4716	—	.500 (12.7)	.312-24

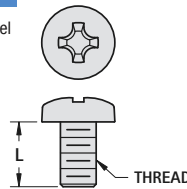
METRIC			
STEEL CAT. NO.	NYLON CAT. NO.	HEX	THREAD
4707	4687	5.00 mm	M2.5
4708	4688	5.50 mm	M3
4709	4689	7.00 mm	M4

STAINLESS STEEL PAN HEAD SCREWS

Phillips drive pan head machine screws.



MATERIAL: Stainless Steel

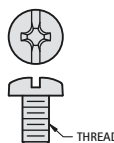


CAT. NO.	L LENGTH	THREAD
9900	.250 (6.4)	4-40
9901	.375 (9.5)	
9902	.500 (12.7)	
9903	.250 (6.4)	6-32
9904	.375 (9.5)	
9905	.500 (12.7)	8-32
9906	.375 (9.5)	
9907	.500 (12.7)	
9908	.750 (19.1)	
9909	.375 (9.5)	10-32
9910	.500 (12.7)	
9911	.750 (19.1)	

BINDING HEAD SCREWS – COLORED HEAD



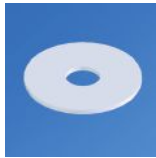
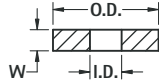
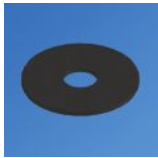
Ideal for quick identification of screw terminal. Reduces errors in wiring of cables. See pages 73-77 for screw terminals with colored screws installed. Only head is painted, provides reliable electrical contact to terminal.



MATERIAL: Brass, Nickel Plate with Painted Color Head

M4 x 6.3mm L	M3 x 6mm L	HEAD COLOR	6-32 x .250 (6.3) L
CAT. NO.	CAT. NO.		CAT. NO.
7799-1	7689-1	NICKEL	8190-1
9192-2	9191-2	RED	9190-2
9192-3	9191-3	BLACK	9190-3
9192-4	9191-4	WHITE	9190-4
9192-5	9191-5	BLUE	9190-5
9192-6	9191-6	GREEN	9190-6
9192-7	9191-7	YELLOW	9190-7

FLAT WASHERS – NYLON & FIBRE



MATERIAL:

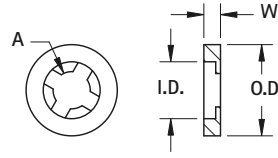
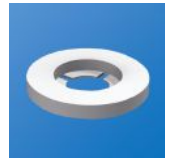
Fibre: Commercial Grade per ASTM D710 **Nylon:** Grade 6/6 per ASTM D4066

MATERIAL	I.D.	O.D.	W THICKNESS		
			.032 (.81)	.047 (1.19)	.062 (1.57)
			CAT. NO.	CAT. NO.	CAT. NO.
FIBRE	.098 (2.49) #2	.187 (4.8)	3111	3148	3366
		.250 (6.4)	3112	3149	3367
		.312 (7.9)	3113	3150	3194
NYLON	.098 (2.49) #2	.187 (4.8)	3114	3151	3356
		.250 (6.4)	3347*	3152	3357*
		.312 (7.9)	3115	3153	3195
FIBRE	.120 (3.05) #4	.250 (6.4)	3116	3154	3368
		.312 (7.9)	348	3155	3196
		.375 (9.5)	3117	3156	3197
NYLON	.120 (3.05) #4	.250 (6.4)	3348	345	3358
		.312 (7.9)	3359	3157	3198
		.375 (9.5)	3118	3158	3200
FIBRE	.140 (3.56) #6	.250 (6.4)	3119	3159	3369
		.312 (7.9)	3120	3160	3370
		.375 (9.5)	3121	3161	3201
NYLON	.140 (3.56) #6	.250 (6.4)	3122	3162	3360
		.312 (7.9)	3349	346	3361
		.375 (9.5)	3123	3163	3202
FIBRE	.171 (4.34) #8	.312 (7.9)	3124	3164	3203
		.375 (9.5)	3125	3165	3372
		.437 (11.1)	3126	3166	3204
NYLON	.171 (4.34) #8	.312 (7.9)	3127	3167	3205
		.375 (9.5)	3350	3168	3363
		.437 (11.1)	3128	3169	3206
FIBRE	.196 (4.98) #10	.312 (7.9)	349	3170	3207
		.375 (9.5)	3129	3171	3208
		.437 (11.1)	3130	3172	3209
NYLON	.196 (4.98) #10	.500 (12.7)	3131	3173	3210
		.312 (7.9)	3364	3174	3211
		.375 (9.5)	3352	3175	3212
FIBRE	.260 (6.60) 1/4"	.437 (11.1)	3132	3176	3213
		.500 (12.7)	3133	3177	3214
		.437 (11.1)	3134	3178	3215
NYLON	.260 (6.60) 1/4"	.500 (12.7)	3135	3179	3373
		.625 (15.9)	3136	3180	3216
		.750 (19.1)	3137	3181	3217
FIBRE	.385 (9.65) 3/8"	.437 (11.1)	3138	3182	3218
		.500 (12.7)	3353	3183	3365
		.625 (15.9)	3139	3184	3219
NYLON	.385 (9.65) 3/8"	.750 (19.1)	3140	3185	3220
		1.000 (25.4)	3141	3186	3221
		.500 (12.7)	3142	3187	3222
FIBRE	.750 (19.1) 3/8"	.625 (15.9)	3143	3188	3223
		1.000 (25.4)	3144	3189	3224
		.500 (12.7)	3145	3190	3225
NYLON	.750 (19.1) 3/8"	.625 (15.9)	3354	3191	3226
		1.000 (25.4)	3146	3192	3227
		1.000 (25.4)	3147	3193	3228

* .090 (2.3) I.D.

NYLON RETAINING WASHERS

Retaining Washers are similar to our standard washers, but with a specially configured ID designed to grip the screw shank. The washer remains attached to the screw, for quick, easy assembly.

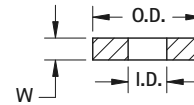
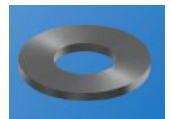


MATERIAL:

Nylon, 6/6 UL Rated 94V-0

W THICKNESS		A	I.D.	O.D.	SCREW SIZE
.032 (0.81)	.062 (1.57)				
CAT. NO.	CAT. NO.				
2244	2284	.115 (2.9)	.078 (1.9)	.203 (5.2)	#2 (M2)
2245	2285	.156 (3.9)	.102 (2.6)	.256 (6.7)	#4
2246	2286	.198 (5.0)	.128 (3.3)	.328 (8.3)	#6 (M3.5)
2247	2287	.235 (5.9)	.152 (3.8)	.390 (9.9)	#8 (M4)
2248	—	.235 (5.9)	.135 (3.4)	.390 (9.9)	#8 (M4)
2249	—	.227 (7.0)	.177 (4.5)	.453 (11.5)	#10
—	2290	.227 (7.0)	.177 (4.5)	.500 (12.7)	#10
—	2291	.227 (7.0)	.177 (4.5)	.630 (16.0)	#10
2252	2292	.375 (9.5)	.234 (5.9)	.593 (15.1)	1/4" (M6)
2253	2293	.564 (14.3)	.350 (8.9)	.890 (22.6)	3/8"

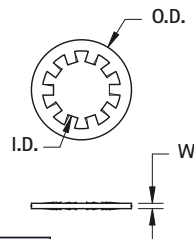
STEEL FLAT WASHERS



MATERIAL: Steel, Zinc Plate

CAT. NO.	I.D.	O.D.	W	SCREW SIZE
4692	.128 (3.3)	.281 (7.1)	.025 (.63)	#4 (M3)
7235-1	.120 (3.1)	.220 (5.6)	.032 (.81)	#4 (M3)
4699	.147 (3.7)	.373 (9.5)	.031 (.80)	#6 (M3.5)
4703	.200 (5.1)	.436 (11.1)	.033 (.84)	#10 (M4)
1719-1	.391 (9.9)	1.500 (38.1)	.094 (2.4)	3/8"

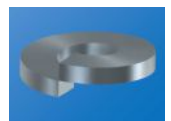
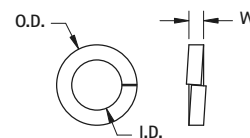
INTERNAL TOOTH WASHERS



MATERIAL: Phosphor Bronze - Nickel Plate

CAT. NO.	I.D.	O.D.	W	SCREW SIZE
11360-4	.120 (3.1)	.265 (6.7)	.017 (.43)	#4 (M3)
11362-5	.226 (5.7)	.402 (10.2)	.020 (.51)	#12 (M5)
4691	.261 (6.6)	.469 (11.9)	.025 (.63)	1/4" (M6)

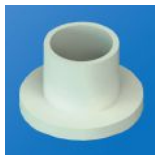
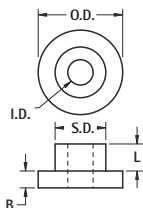
STEEL LOCK WASHERS



MATERIAL: Steel, Zinc Plate

CAT. NO.	I.D.	O.D.	W	SCREW SIZE
4693	.117 (3.0)	.205 (5.2)	.031 (.78)	#4 (M3)
7235-2	.117 (3.0)	.197 (5.0)	.025 (.63)	#4 (M3)
4700	.144 (3.7)	.250 (6.4)	.033 (.84)	#6 (M3.5)
1477	.195 (5.0)	.320 (8.1)	.047 (1.2)	#10 (M4)
1476	.256 (6.5)	.479 (12.2)	.074 (1.9)	1/4" (M6)
1485	.321 (8.2)	.586 (14.8)	.078 (2.0)	5/16" (M8)

NYLON SHOULDER WASHER/BUSHINGS

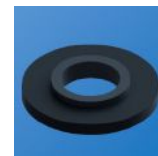
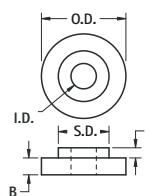


MATERIAL: Nylon 6/6 per ASTM D4066

CAT. NO.	L	O.D.	B	I.D.	S.D.	SCREW SIZE
7680	.025 (.64)	.260 (6.6)	.030 (.76)	.095 (2.4)	.154 (3.9)	#2
3051	.125 (3.2)	.181 (4.6)	.047 (1.2)	.090 (2.3)	.120 (3.1)	
3101	.187 (4.8)	.181 (4.6)	.047 (1.2)	.090 (2.3)	.120 (3.1)	
3052	.250 (6.4)	.181 (4.6)	.047 (1.2)	.090 (2.3)	.120 (3.1)	
3049*	.031 (.79)	.218 (5.5)	.040 (1.0)	.115 (2.9)	.135 (3.4)	#4
7681	.047 (1.2)	.250 (6.4)	.032 (.81)	.115 (2.9)	.185 (4.7)	
3053	.093 (2.4)	.235 (6.0)	.047 (1.2)	.115 (2.9)	.145 (3.7)	
3102	.125 (3.2)	.235 (6.0)	.047 (1.2)	.115 (2.9)	.145 (3.7)	
3103	.187 (4.7)	.235 (6.0)	.047 (1.2)	.115 (2.9)	.145 (3.7)	
340	.250 (6.4)	.235 (6.0)	.047 (1.2)	.115 (2.9)	.145 (3.7)	
7682	.032 (.81)	.385 (9.8)	.062 (1.6)	.145 (3.7)	.240 (6.1)	#6
7683	.032 (.81)	.250 (6.4)	.062 (1.6)	.140 (3.6)	.187 (4.7)	
7684	.032 (.81)	.312 (7.9)	.062 (1.6)	.140 (3.6)	.187 (4.7)	
3054	.125 (3.2)	.290 (7.4)	.047 (1.2)	.140 (3.6)	.170 (4.3)	
3104	.187 (4.7)	.290 (7.4)	.047 (1.2)	.140 (3.6)	.170 (4.3)	
341	.250 (6.4)	.290 (7.4)	.047 (1.2)	.140 (3.6)	.170 (4.3)	
3055	.500 (12.7)	.290 (7.4)	.047 (1.2)	.140 (3.6)	.170 (4.3)	
7685	.032 (.81)	.375 (9.5)	.032 (.81)	.171 (4.3)	.250 (6.4)	#8
3056	.140 (3.6)	.344 (8.7)	.062 (1.6)	.171 (4.3)	.205 (5.2)	
3105	.250 (6.4)	.344 (8.7)	.062 (1.6)	.171 (4.3)	.205 (5.2)	
342	.375 (9.5)	.344 (8.7)	.062 (1.6)	.171 (4.3)	.205 (5.2)	
3106	.500 (12.7)	.344 (8.7)	.062 (1.6)	.171 (4.3)	.205 (5.2)	
7686	.032 (.81)	.375 (9.5)	.062 (1.6)	.196 (5.0)	.308 (7.8)	#10
3107	.093 (2.4)	.438 (11.1)	.062 (1.6)	.200 (5.1)	.260 (6.6)	
3108	.250 (6.4)	.399 (10.1)	.062 (1.6)	.200 (5.1)	.260 (6.6)	
3057	.500 (12.7)	.399 (10.1)	.062 (1.6)	.200 (5.1)	.260 (6.6)	
3058	.750 (19.1)	.399 (10.1)	.062 (1.6)	.200 (5.1)	.260 (6.6)	
7687	.032 (.81)	.437 (11.1)	.032 (.81)	.253 (6.4)	.310 (7.9)	.250-20
7688	.078 (2.0)	.492 (12.7)	.032 (.81)	.260 (6.7)	.312 (7.9)	
3059	.187 (4.7)	.513 (13.0)	.062 (1.6)	.260 (6.7)	.312 (7.9)	
3109	.250 (6.4)	.513 (13.0)	.062 (1.6)	.260 (6.7)	.312 (7.9)	
3110	.375 (9.5)	.513 (13.0)	.062 (1.6)	.260 (6.7)	.312 (7.9)	
3060	.500 (12.7)	.513 (13.0)	.062 (1.6)	.260 (6.7)	.312 (7.9)	

* Black

FIBRE SHOULDER WASHERS



MATERIAL: Fibre, Commercial Grade per ASTM D710

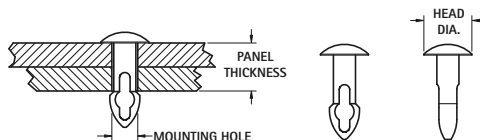
CAT. NO.	L	O.D.	B	I.D.	S.D.	SCREW SIZE
3229	.025 (.64)	.250 (6.4)	.047 (1.2)	.093 (2.4)	.123 (3.1)	#2
3061	.025 (.64)	.250 (6.4)	.047 (1.2)	.093 (2.4)	.156 (4.0)	
344	.015 (.38)	.312 (7.9)	.062 (1.6)	.125 (3.2)	.203 (5.2)	#4
343	.025 (.64)	.312 (7.9)	.062 (1.6)	.125 (3.2)	.203 (5.2)	
3062	.031 (.79)	.250 (6.4)	.031 (.79)	.115 (2.9)	.187 (4.7)	
3230	.031 (.79)	.281 (7.1)	.062 (1.6)	.115 (2.9)	.175 (4.4)	#6
3231	.031 (.79)	.312 (7.9)	.062 (1.6)	.120 (3.1)	.180 (4.6)	
4698	.031 (.79)	.250 (6.4)	.062 (1.6)	.140 (3.6)	.187 (4.7)	
3064	.031 (.79)	.312 (7.9)	.062 (1.6)	.140 (3.6)	.187 (4.7)	
3232	.031 (.79)	.375 (9.5)	.062 (1.6)	.140 (3.6)	.210 (5.3)	#8
3233	.031 (.79)	.375 (9.5)	.062 (1.6)	.140 (3.6)	.240 (6.1)	
3234	.031 (.79)	.500 (12.7)	.062 (1.6)	.140 (3.6)	.240 (6.1)	
3065	.031 (.79)	.375 (9.5)	.062 (1.6)	.170 (4.3)	.246 (6.2)	#10
3066	.031 (.79)	.417 (10.6)	.062 (1.6)	.170 (4.3)	.210 (5.3)	
3235	.031 (.79)	.312 (7.9)	.062 (1.6)	.170 (4.3)	.218 (5.5)	
3236	.031 (.79)	.375 (9.5)	.062 (1.6)	.170 (4.3)	.215 (5.5)	
3237	.031 (.79)	.500 (12.7)	.062 (1.6)	.170 (4.3)	.240 (6.1)	
4702	.031 (.79)	.375 (9.5)	.062 (1.6)	.194 (4.9)	.308 (7.8)	#10
3238	.031 (.79)	.375 (9.5)	.062 (1.6)	.194 (4.9)	.240 (6.1)	
3239	.031 (.79)	.500 (12.7)	.062 (1.6)	.196 (5.0)	.240 (6.1)	
4711	.031 (.79)	.500 (12.7)	.062 (1.6)	.253 (6.4)	.308 (7.8)	.250-20
3240	.031 (.79)	.625 (15.9)	.062 (1.6)	.265 (6.7)	.359 (9.1)	
3069	.031 (.79)	.625 (15.9)	.062 (1.6)	.385 (9.8)	.498 (12.6)	.375-24
3241	.031 (.79)	.750 (19.1)	.062 (1.6)	.385 (9.8)	.498 (12.6)	

WASHERS & CLIPS

KEY HOLE CLIPS



- Key hole design allows for easy installation of the fastener
- Can be hand installed, no tooling required
- One piece design, can be removed and reused with no missing parts
- Bullet tip helps to align panels during the assembly process
- Tapered locking shank provide a tight fit between the two panels
- Domed head provides a clean appearance to top panel



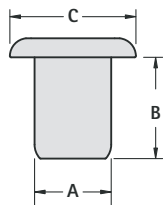
MATERIAL: Nylon 6/6 UL Rated 94V-2, Black

CAT. NO.	PANEL THICKNESS	HOLE SIZE	HEAD DIA.
3300	.093 (2.4)	.125 (3.2)	.250 (6.4)
3301	.125 (3.2)		
3302	.156 (4.0)		
3303	.187 (4.8)		
3305	.250 (6.4)		
3310	.093 (2.4)	.158 (4.0)	.312 (7.9)
3311	.125 (3.2)		
3312	.156 (4.0)		
3313	.187 (4.8)		
3315	.250 (6.4)		
3320	.125 (3.2)		
3321	.156 (4.0)	.187 (4.8)	.312 (7.9)
3322	.187 (4.8)		
3324	.250 (6.4)		
3330	.156 (4.0)		
3331	.187 (4.8)		
3333	.250 (6.4)	.219 (5.6)	.344 (8.7)
3335	.312 (7.9)		

WIDE ROLL EYELETS



A choice of the most popular sizes in use for PC board and electronic assembly applications.

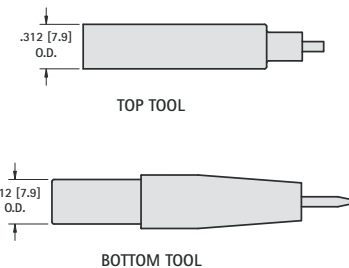


MATERIAL: Brass, Bright Electro Tin, MIL-T-10727. Other platings can be furnished.

CAT. NO.	A OUTSIDE DIAMETER BARREL	B LENGTH UNDER FLANGE	C FLANGE DIAMETER	MTG. HOLE SIZE	STAKING TOOL CAT. NO.
22		.062 (1.57)			
23		.093 (2.36)			
24	.059 (1.49) O.D.	.125 (3.18)	.105 (2.7)	.062 (1.57) USE DRILL #51	3075
25	.045 (1.14) I.D.	.156 (3.96)			
26		.187 (4.75)			
27		.219 (5.56)			
33		.093 (2.36)			
34	.089 (2.26) O.D.	.125 (3.18)	.150 (3.8)	.093 (2.36) USE DRILL #42	3076
35	.070 (1.78) I.D.	.156 (3.96)			
36		.187 (4.75)			
37		.219 (5.56)			
43		.093 (2.36)			
44		.125 (3.18)			
45	.121 (3.07) O.D.	.156 (3.96)	.200 (5.1)	.125 (3.18) USE DRILL #30	3077
46	.102 (2.59) I.D.	.187 (4.75)			
47		.219 (5.56)			
48		.250 (6.35)			
14		.125 (3.18)			
15	.152 (3.86) O.D.	.156 (3.96)	.245 (6.2)	.156 (3.96) USE DRILL 5/32"	3079
16	.132 (3.35) I.D.	.187 (4.75)			
17		.219 (5.56)			

STAKING TOOLS

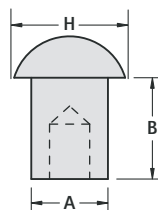
Set consisting of top and bottom tool. Made from Tool Steel and highly polished.



SEMI-TUBULAR RIVETS



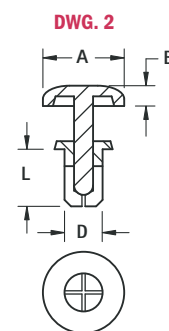
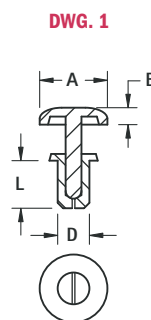
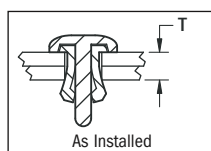
These standardized brass rivets typify the scope and variety of popular rivets that will provide faster and stronger assemblies at lower cost. We suggest you rivet and test a sample before purchasing large quantities for your application.



MATERIAL: Brass, Nickel Plate

CAT. NO.	B LENGTH UNDER HEAD	A SHANK DIAMETER	H HEAD DIAMETER	MTG. HOLE SIZE
3381	.125 (3.2)	.060 (1.55)	.109 (2.8)	.067 (1.70) Dia. USE DRILL #51
3382	.156 (3.9)			
3383	.187 (4.8)			
3384	.156 (3.9)	.087 (2.21)	.147 (3.7)	.093 (2.36) Dia. USE DRILL #42
3385	.187 (4.8)			
3386	.218 (5.5)			
3387	.250 (6.4)			
3388	.156 (3.9)			
3389	.187 (4.8)	.120 (3.06)	.218 (5.5)	.128 (3.25) Dia. USE DRILL #30
3390	.218 (5.5)			
3391	.250 (6.4)			

SNAP RIVETS



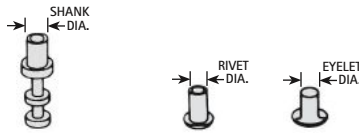
Attach panels and mounting hardware without any tooling. Leaves a clean cosmetic look once installed. Can be installed without access to underside. Removable so assembly can be easily repaired or upgraded.

MATERIAL: Nylon 6/6, UL Rated 94V-2, Black

CAT. NO.	DWG.	T PANEL THICKNESS	L RIVET LENGTH	D RIVET DIAMETER	A HEAD DIAMETER	B HEAD HEIGHT	MTG. HOLE SIZE
3440	1	.051/.079 (1.3/2.0)	.130 (3.3)	.076 (1.9)	.165 (4.2)	.047 (1.2)	.083/.087 (2.1/2.2)
3441	1	.083/.110 (2.1/2.8)	.160 (4.0)				
3442	1	.114/.142 (2.9/3.6)	.190 (4.8)				
3443	2	.118/.157 (3.0/4.0)	.220 (5.6)	.138 (3.5)	.252 (6.4)	.063 (1.6)	.142/.146 (3.6/3.7)
3444	2	.146/.181 (3.7/4.6)	.240 (6.1)				
3445	2	.177/.217 (4.5/5.5)	.280 (7.1)				
3446	2	.217/.256 (5.5/6.5)	.310 (7.9)				
3447	2	.177/.217 (4.5/5.5)	.280 (7.1)				
3448	2	.217/.256 (5.5/6.5)	.310 (7.9)	.158 (4.0)	.315 (8.0)	.071 (1.8)	.161/.165 (4.1/4.2)
3449	2	.256/.295 (6.5/7.5)	.350 (9.0)				
3450	2	.295/.335 (7.5/8.5)	.390 (10.0)				

"BASIC" STAKING KIT

This kit provides the basic components needed to stake a majority of our most popular sizes of eyelets, rivets and terminals. The unskilled operator can produce professional looking assemblies quickly and with minimal training.

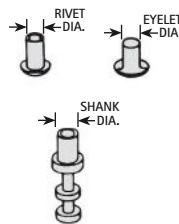
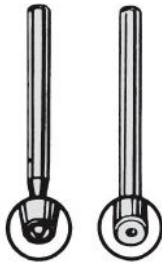


CAT. NO.	CONSISTS OF ONE EACH:
1714	Top Setting Tool
1715	Anvil Holder
1719	Bottom Anvil

CAT. NO. 1721 COMPLETE KIT

"MASTER" STAKING KIT

This kit provides all of the components needed to stake most terminals, standoffs, eyelets or rivets. This kit also includes sprung receding pins so that eyelets can be prealigned for easy assembly of components. Kit supplied in convenient plastic case for ease of use.



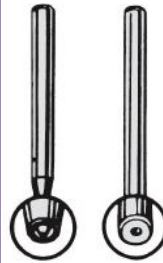
CAT. NO.	CONSISTS OF ONE EACH:
1714	Top Swaging Tool
1715	
1304	
1305	
1306	
1307	
1324	Anvil Holder
1719	
1325	Anvil for 6-32 Standoffs
1326	Anvil for Turret Terminals
1716	
1717	
1722	
1726	Anvil for Fork Turret Terminals
1315	Receding Pin - .045 (1.15) Dia.
1316	Receding Pin - .069 (1.75) Dia.
1321	Return Spring for Receding Pins

CAT. NO. 1713 COMPLETE KIT

INDIVIDUAL TOOLS

TOP SETTING TOOLS (Swager)

1/4" Diameter Tools



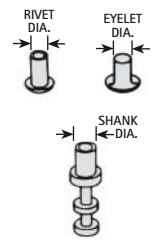
For Single End Terminals, Eyelets or Rivets

CAT. NO.	FOR SHANK DIA.
1714	.062 (1.57) to .098 (2.49)
1715	.110 (2.8) to .125 (3.2)
1328	.130 (3.3) to .140 (3.6)
1324	.180 (4.5) to .190 (4.8)

For Double End (Feed-Thru)

Hole in tool fits over Pin head and securely stakes the rivet part of terminal.

CAT. NO.	FOR PIN ON RIVET END
1304	.051 (1.30) Hole Dia.
1305	.063 (1.60) Hole Dia.
1306	.073 (1.85) Hole Dia.
1307	.086 (1.49) Hole Dia.
1324	.098 (2.49) Hole Dia.

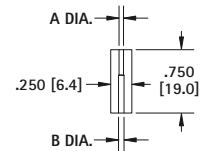


BOTTOM ANVILS

For Single End Terminals or Double End Terminals

Anvils have different size holes in each end therefore will accept 2 sizes of Pins of either Single or Double end Turret type Terminals.

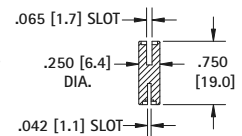
CAT. NO.	A DIA.	B DIA.
1722	.053 (1.35)	.065 (1.65)
1716	.070 (1.78)	.100 (2.54)
1717	.128 (3.25)	.152 (3.86)



ANVILS FOR FORK TERMINALS

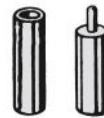


Accepts Diameter of 3/32 to 5/32 at one end and diameter of 3/16 other end .040 (1.0) slot one end and .060 (1.52) slot at other end.



CAT. NO. 1726

ANVILS FOR SWAGE SPACERS



CAT. NO.	BUSHING SIZE
1326	Holds Bushing with 5/32" O.D.
1325	For Bushing with 6-32" Thread
1309	For Bushing with 4-40 Thread

TOOL HOLDERS



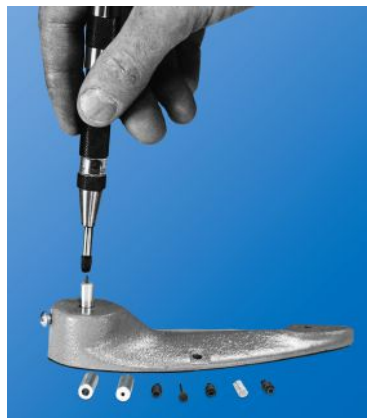
CAT. NO. 1719

Tool holders will hold all .250 (6.4) diameter anvils. May be used with receding pin and return spring to hold eyelets in place during the staking process.

"IMPACT" STAKING KIT

All that is required to stake almost all swage components. Just press down and it stakes. Tools provided allow bench top staking with out setting up arbor or drill press. Staking tool can be adjusted

to provide heavy to light blows. Receding sprung pins can be assembled into anvil to locate eyelets for easy assembly of components. Kit supplied in convenient plastic case for ease of use.



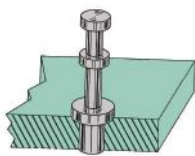
CAT. NO. 1707 COMPLETE KIT

CAT. NO.	CONSISTS OF ONE EACH:
TOOLS	
1302	Impact Handle
1300	Anvil Tool Holder Base
SWAGING TOOLS	
1312	.040 (1.02) to .072 (1.83)
1313	.078 (1.98) to .093 (2.36)
SWAGING TOOLS FOR DOUBLE ENDED TURRET	
1310	.053 (1.35) Diameter Hole
1311	.062 (1.57) Diameter Hole
ANVIL COMPONENTS	
1716	Anvil for Turret Terminals
1717	
1722	
1726	Anvil for Fork Turret Terminals
1315	Receding Pin - .045 (1.15) Dia.
1316	Receding Pin - .069 (1.75) Dia.
1321	Return Spring for Receding Pins

NON-INSULATED TURRET TERMINALS

Most terminals are available with proper swage length for .032 (0.8), .062 (1.6), .093 (2.4) or .125 (3.2) boards Turret terminals are available in a range of sizes from .093 (2.4) to .484 (12.3) height. Tooling available to properly swage turrets into board. Custom turret terminals can be

machined to your exact specifications. Please email your design to our engineering department. Please visit our website for detailed drawings and specifications of turret terminals.



SINGLE TURRET



DOUBLE TURRET



TRIPLE TURRET



MATERIAL: Brass, Tin Plate

FORK TURRETS



THREADED TURRETS



TUBULAR TURRETS



DOUBLE-ENDED TURRETS



[keyelco.com/
turret-terminals.cfm](http://keyelco.com/turret-terminals.cfm)

INSULATED TURRET TERMINALS

- Insulated turret terminals are electrically isolated from panel or board
- PTFE insulator will easily install into mount hole
- Once installed, the PTFE will creep into surface imperfections of the hole and keep the terminal in place

Threaded Terminals: Ideal for more robust applications.

Feedthru Terminals: Allow a signal or power to pass through a conductive case or panel.

Custom Terminals: Machined to your exact specifications. Please email your design to our engineering department.

MATERIAL:

Pins: Brass, Tin Plate

Insulator: PTFE or Diallyl Phthalate

PINS



THREADED TURRETS



TURRETS



DOUBLE-ENDED TURRETS



[keyelco.com/
insulated-terminals.cfm](http://keyelco.com/insulated-terminals.cfm)

TERMINAL BOARDS

- Ready made terminal boards
- Save on tooling
- Economical
- Diverse range of sizes and terminal configurations
- Commercial and military specifications
- Custom terminal boards machined to your requirements

MATERIAL:

Terminals: Brass, Tin Plate

Available Board materials:

GEE (G10, Glass Epoxy)

PBE (XP Phenolic)

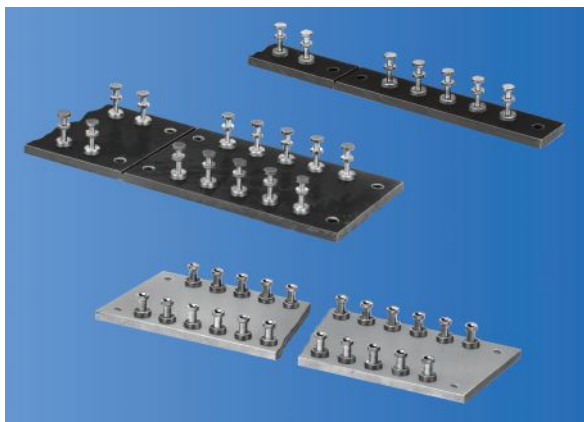
GPO-3 (Fiberglass)



[keyelco.com/
terminal-boards.cfm](http://keyelco.com/terminal-boards.cfm)

TURRET TERMINAL BOARDS

We offer a wide range of Turret Terminal Boards including: Scored, Miniature Turret, Thru Hole Turret, Military style, Single and Double Row Boards.



QUICK-FIT TERMINAL STRIPS



Quick fit terminal Strips provide a convenient access point allowing wires with standard crimp terminals to be installed without any soldering. Ideal for maintenance items.

BINDING POST (SCREW) TERMINAL STRIPS



Screw terminal Boards can be used to connect to a stripped wire or wire with spade terminal. Ideal for configurable applications.

SOLDER TAB STRIPS



Solder Tab terminal strips provide a convenient solder point for wiring. Ideal for permanent applications.